



OWNER'S MANUAL



#1200 Super 5th
(16K)

Gross Trailer Weight (max.) 16,000 lbs
King Pin Weight (max.) 4,000 lbs



#0800 Super 5th
(20.5K)

Gross Trailer Weight (max.) 20,500 lbs.
King Pin Weight (max.) 5,125 lbs.



#0503 Super 5th (25.5K)

#0504 Adjustable Super 5th (25.5K)

Gross Trailer Weight (max.) 25,500 lbs.
King Pin Weight (max.) 6,375 lbs.



#0515 Low Profile Super 5th (25.5K)

#0516 Low Profile Adj. Super 5th (25.5K)

Gross Trailer Weight (max.) 25,500 lbs.
King Pin Weight (max.) 6,375 lbs.

The following instructions provide valuable information regarding the function and proper use of the Super 5th fifth wheel towing system.

YOU MUST COMPLETELY READ THE INSTRUCTIONS WITHIN THIS MANUAL PRIOR TO OPERATING THE HITCH TO PREVENT UNNECESSARY DAMAGE TO THE HITCH AND/OR YOUR VEHICLE.

INTRODUCTION

The Following instructions will provide valuable information regarding the function and proper use of the PullRite Super 5th Towing System. Please take the necessary time to read these instructions completely before attempting to use your Super 5th.

INDEX

	<u>Pg.</u>
HITCH SPECIFICATIONS	1
16,000 PARTS LIST	2
20,500 & 25,500 PARTS LIST	3
ADJUSTABLE ROCKER ARM PARTS LIST & INSTRUCTIONS	4
25,500 LOW PROFILE & LOW PROFILE ADJUSTABLE ROCKER ARM PARTS LIST	5
ACCESSORIES AND MAINTENANCE	6
5TH WHEEL PLATE OPERATION	7
HITCHING UP INSTRUCTIONS	8
UNHITCHING INSTRUCTIONS & CHALLENGE vs. SOLUTION	9
WARRANTY	
WARRANTY REGISTRATION	

16,000 PARTS LIST

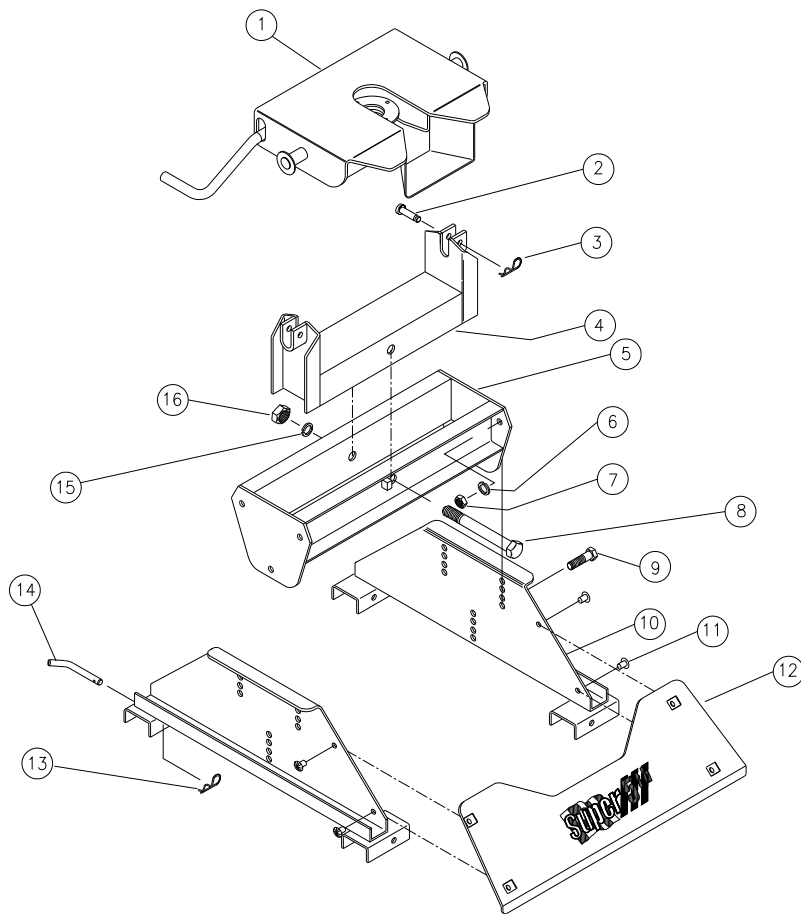


Figure 1

Ref.	Part #	Part Name
1	3601	Plate
2	98410111	Clevis Pin
3	98410127	Clevis Pin Clip
4	0802	Rocker Arm
5	1202	Cross Member
6	98200142	1/2" Lock Washer
7	98150153	1/2"-13 Hex Nut
8	98010147	Rocker Arm Pivot Bolt
9	98010167	1/2"-13 x 1 1/2" HHCS
10	1203	Base Sides (set)
11	98410560	Plastic Barbed Fastener
12	120302	Cover Assembly
13	98410127	Clevis Pin Clip
14	08060001	Base Rail Hinge Pins
15	98200124	3/4" Split Lock Washer
16	98150131	3/4"-10 Hex Nut

Table 1

20,500 PARTS LIST

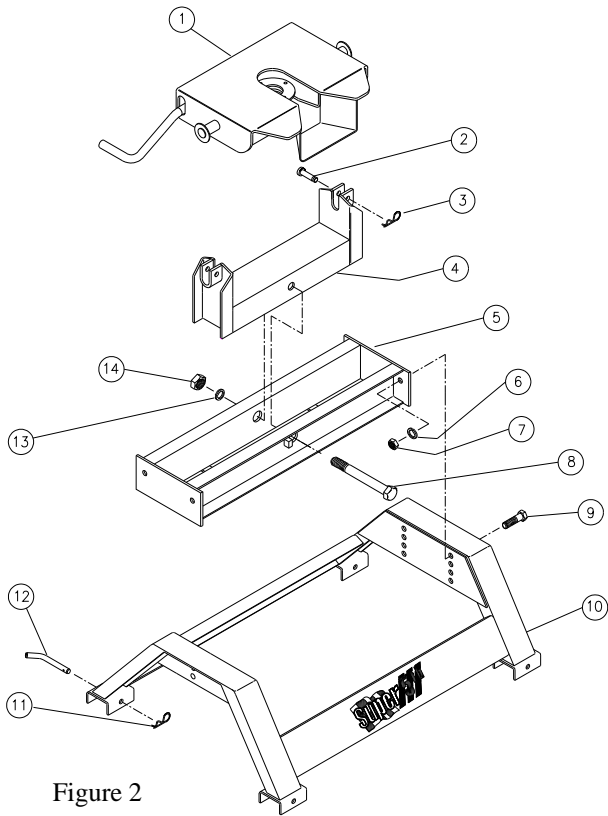


Figure 2

Ref.	Part #	Part Name
1	3601	Plate
2	98410111	Clevis Pin
3	98410127	Clevis Pin Clip
4	0802	Rocker Arm
5	0803	Cross Member
6	98200142	1/2" Lock Washer
7	98150153	1/2"-13 Hex Nut
8	98010147	Rocker Arm Pivot Bolt
9	98010167	1/2"-13 x 1 1/2" HHCS
10	0804	Base Sides (set)
11	98410127	Clevis Pin Clip
12	08060001	Base Rail Hinge Pin
13	98200124	3/4" Split Lock Washer
14	98150131	3/4"-10 Hex Nut

Table 2

25,500 PARTS LIST

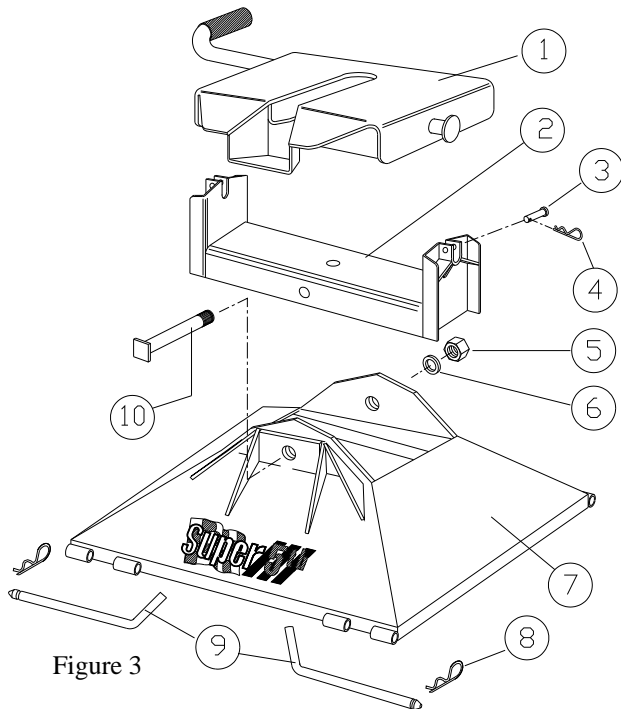


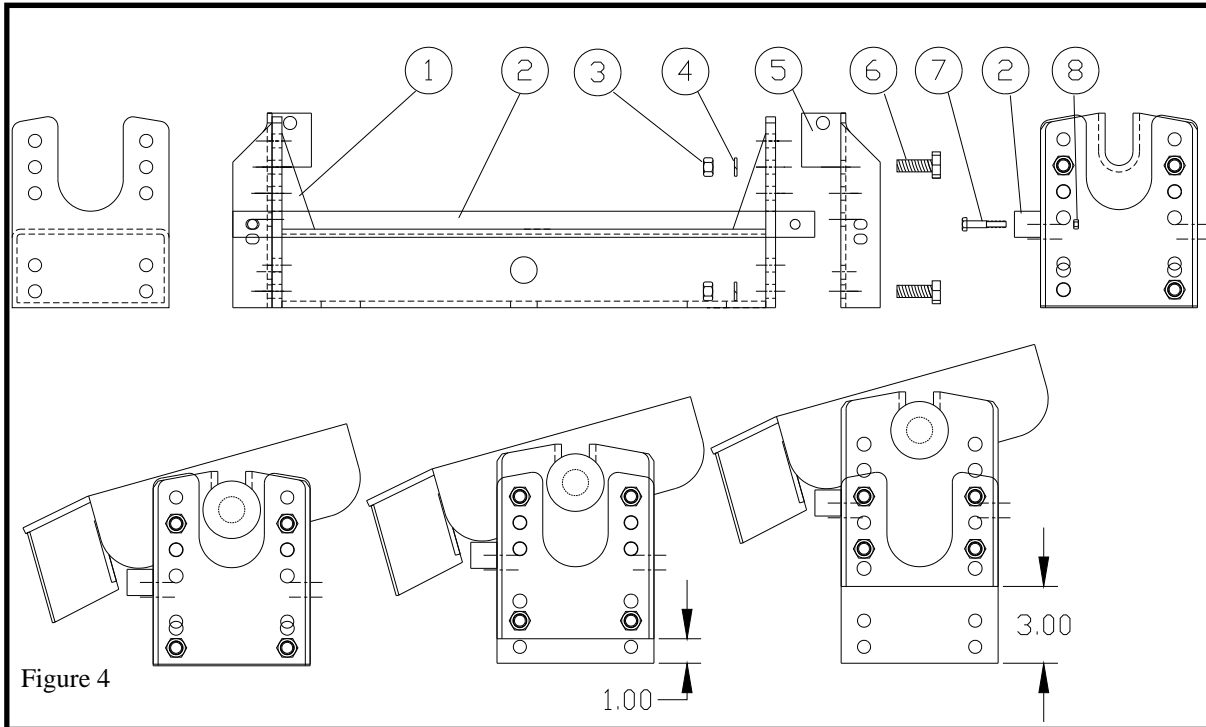
Figure 3

Ref.	Part #	Part Name
1	3601	Plate
2	050403	Rocker Arm
3	98410111	Clevis Pin
4	98410127	Clevis Pin Clip
5	98150120	1"-8 Hex Nut
6	98200115	1" Lock Washer
7	050402	Base
8	98410143	#9 Hitch Pin Clip
9	05010601	Base Rail Hinge Pin
10	140501	Rocker Arm Pivot Bolt

Table 3

ADJUSTABLE ROCKER ARM (PART # 050203)

FOR PART #: 0503 AND 0504



NOTE: If the Adjustable Rocker Arm Assembly is purchased as a substitute for the standard non adjustable rocker arm, then Adjustable Base Rails Part # 050204 must be purchased as well. The Adjustable Rocker Arm and Adjustable Base Rails are standard on hitch kit # 0504.

Refer to **(Figure 4)** when setting the desired height location. Fasten the Adjustable Bracket (5) using the widest possible hole locations as shown. Torque the 1/2" fasteners (3,4 & 6) to 75 foot pounds. **To avoid damage to this product do not bolt the Adjustable Bracket (5) higher than shown in (figure 4).**

Ref.	Part #	Part Name
1	05020301	Rocker Arm
2	05020305	Plate Rest
3	98150153	1/2"-13 Hex Nut
4	98200142	1/2" Lock Washer
5	05020304	Adjustable Bracket
6	98010167	1/2"-13 x 1 1/2" HHCS
7	98410239	1/4"-20 x 1 1/2" HHCS
8	98410255	1/4"-20 Nylock Nut

Table 4

Fasten the Plate Rest Bar (2) in the top hole located in the side of the Adjustable Bracket (5) with the 1/4" fasteners (7 & 8) provided.

25,500 LOW PROFILE PARTS LIST

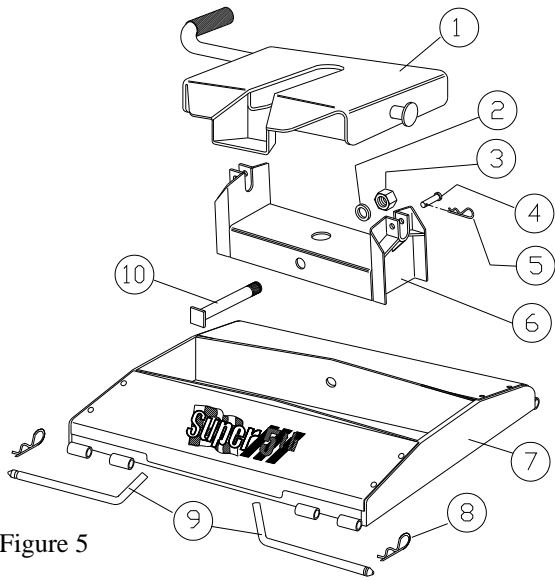


Figure 5

Table 5

Ref.	Part #	Part Name
1	3601	Plate
2	98200115	1" Lock Washer
3	98150120	1"-8 Hex Nut
4	98410111	Clevis Pin
5	98410127	Clevis Pin Clip
6	050403	Rocker Arm
7	051503	Base
8	98410143	#9 Hitch Pin Clip
9	05010601	Base Rail Release Pin
10	140501	Rocker Arm Pivot Bolt

LOW PROFILE ADJUSTABLE ROCKER ARM PART # 051403

FOR PART #: 0515 & 0516

NOTE: If the Adjustable Rocker Arm Assembly is purchased as a substitute for the standard non adjustable rocker arm, then Adjustable Base Rails Part # 050204 must be purchased as well. The Adjustable Rocker Arm and Adjustable Base Rails are standard on hitch kit # 0516.

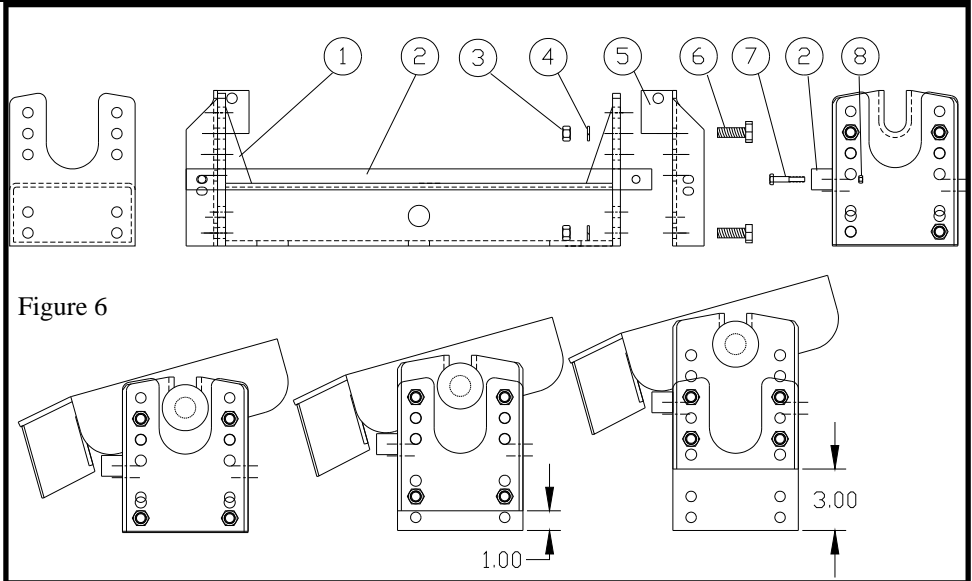


Figure 6

Refer to (Figure 6) when setting the desired height location. Fasten the Adjustable Bracket (5) using the widest possible hole locations as shown. Torque the 1/2" fasteners (3,4 & 6) to 75 foot pounds. **To avoid damage to this product do not bolt the Adjustable Bracket (5) higher than shown in (Figure 6).**

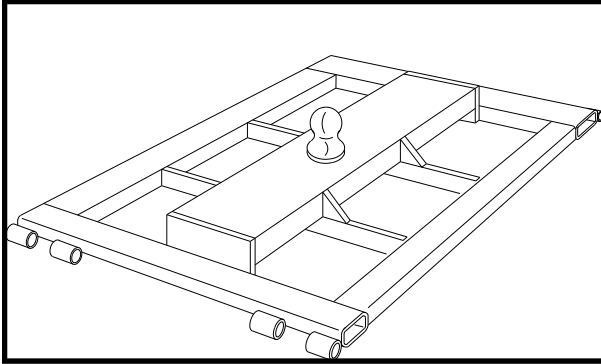
Fasten the Plate Rest Bar (2) in the top hole located in the side of the Adjustable Bracket (5) with the 1/4" fasteners (7 & 8) provided.

Ref.	Part #	Part Name
1	05020301	Rocker Arm
2	05020305	Plate Rest
3	98150153	1/2"-13 Hex Nut
4	98200142	1/2" Lock Washer
5	05020304	Adjustable Bracket
6	98010167	1/2"-13 x 1 1/2" HHCS
7	98410239	1/4"-20 x 1 1/2" HHCS
8	98410255	1/4"-20 Nylock Nut

Table 6

GOOSENECK PLATE

FOR HITCH PART #: 0503, 0504, 0515 & 0516

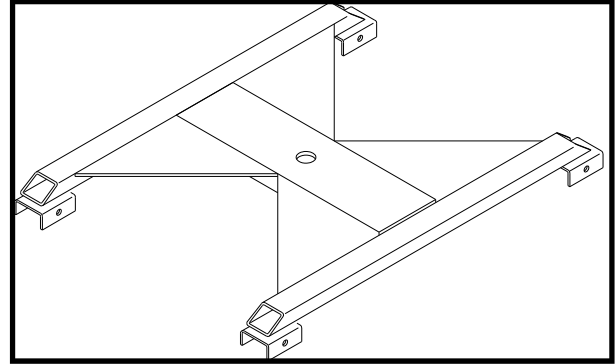


15K GOOSENECK PLATE (No Ball) P\N: 050501

25K GOOSENECK PLATE (w/ 30K Ball) P\N: 050601

GOOSENECK PLATE

FOR HITCH PART #: 1200 & 0800



15K GOOSENECK PLATE (No Ball) P\N: 080801

Gooseneck Plates may be purchased to add versatility to your truck. They can be easily attached to the same Base Rails installed in your truck. Remove the existing Super 5th Hitch and install the Gooseneck Plate using the same Base Rail Release Pins.

SUPER 5th MAINTENANCE

LUBRICATION:

ROCKER ARM PIVOT BOLT

- For 16,000 and 20,500. Before use, remove and lubricate with quality grade grease. Reinstall, tightening until the lock washer is flattened or until the Rocker Arm is stiff when rotated. For 25,500 and Low Profile. Remove the Plate (1) for access to the top of the Rocker Arm.
- Locate the zerk fitting through the large hole in the top of the Rocker Arm. Using a grease gun, inject a quality grade grease (about 5 to 6 pumps).
- Lubricate this bolt annually, more often with heavy use.

BASE RAIL RELEASE PINS

- A light coating of oil (WD-40) will make these easy to install and remove.

HITCH PLATE

- All moving parts should be lubricated with a light oil or grease (WD-40 or silicone spray) before each trip or as needed. Work the Release Handle in and out so that lubricant can be dispersed over all moving surfaces. Degrease the entire plate and moving parts annually to prevent oil and dirt buildup, then re-lubricate.

KING PIN

- Spray a light coating of WD-40 or other similar lubricant on the King Pin and King Pin Plate, then wipe all surfaces with a rag to remove loose rust.

OTHER:

FASTENERS

- Inspect all of the mounting bolts (above and below the bed) periodically for tightness and general condition.

5TH WHEEL PLATE OPERATION

Remove the Plate (1) from the Rocker Arm and replace it upside down. Study **(Figure 7)** and manually operate the Release Handle to better understand the locking action. This will allow you to better understand the hitching procedure and prevent accidentally dropping your trailer due to incorrect hitching.

- 1) When the Plate (1) is in the upright position gravity keeps the Release Handle in the lower position and the Handle Catch is then located on the inside of the outer casing of the Plate (1). See the lower drawing in **(Figure 8)**
- 2) To open the Lock Jaw Assembly, lift the Release Handle and pull it toward you until the Lock Catch engages the Lock Jaw Assembly **(Figure 8)**.
- 3) As the King Pin moves into the Plate (1), it will contact the Lock Lever forcing the Lock Catch to disengage the Lock Jaw Assembly, allowing the Main Spring to pull the Lock Bar to the closed position. The gear teeth of the Lock Bar engages the gear teeth of the Lock Jaw Assembly and causes it to close behind the King Pin.
- 4) When the Lock Jaw Assembly is completely closed, the Release Handle will also be fully retracted into the Plate (1) and the Handle Catch will fall down behind the outer casing of the Plate (1). In this position the King Pin is locked in the 5th Wheel Plate ready for travel.

- 5) To discourage theft or pranksters, place a padlock through the obround hole above the Release Handle, so it can not be raised enough to clear the Handle Catch. **(Figure 8)**

CAUTION: DO NOT ATTEMPT TO TRIP THE LOCK JAW ASSEMBLY WITH YOUR HAND, USE A PROBE TO SIMULATE THE KING PIN ACTION.

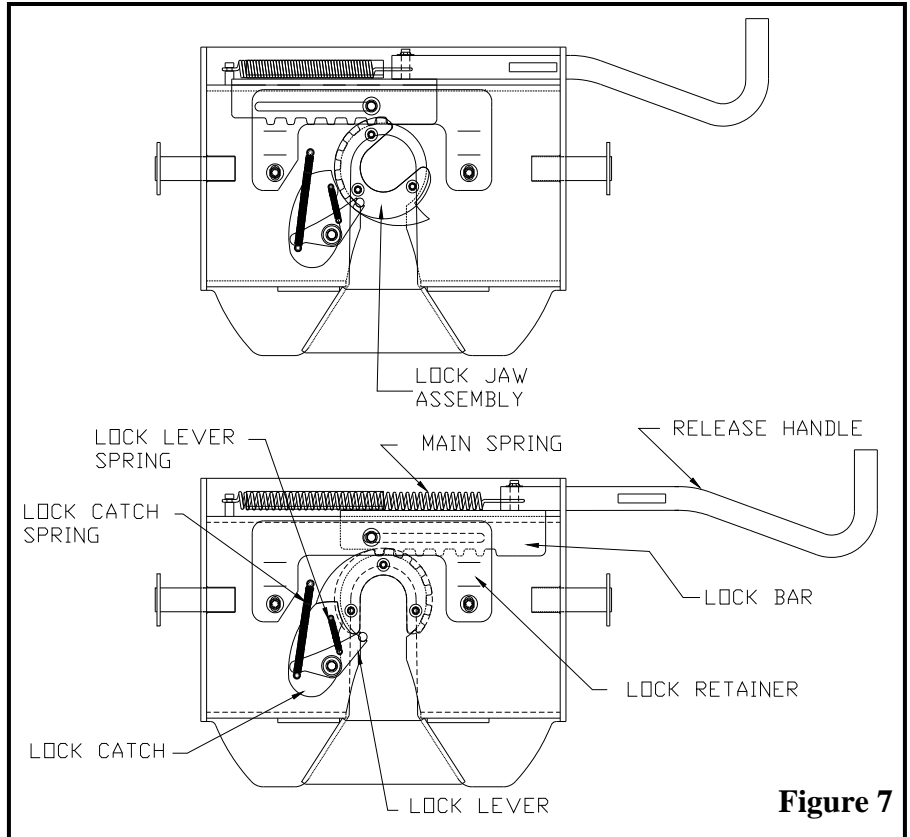


Figure 7

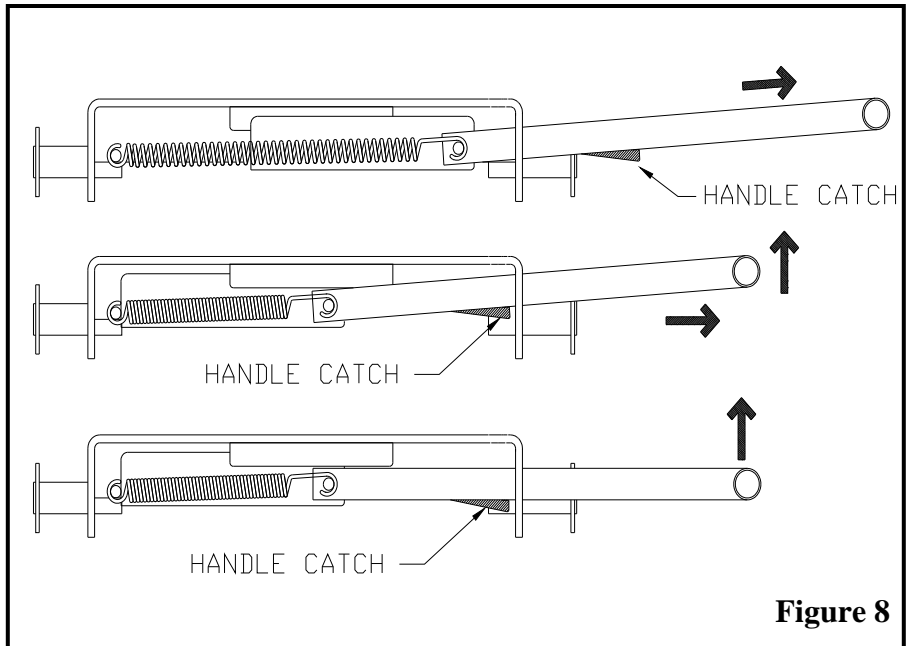


Figure 8

HITCHING UP

WARNING: Never perform any of the following actions while any part of any one is between either vehicle in any way.

- 1) Block the trailer wheels so that it will not roll back.
- 2) Lower the tail gate and back up to within 6” of the “ramp” area of the Hitch Plate (1). **(Figure 10)**
- 3) Raise or lower the trailer jacks so the bottom of the King Pin Box is aligned slightly above the bottom of the “ramp” area of the 5th Wheel Plate (1) **(Figure 10)**. This procedure will cause the front edge of the trailer King Pin Box to “ride up” the “ramp” and flatten or tilt the Hitch Plate (1) into a parallel position.

CAUTION: If this procedure is not followed, the King Pin may bind in the Plate (1) mechanism and not lock-in properly. Following the procedure as outlined in step 3 will ensure that you will not “high hook” the King Pin in the Plate (1). “High hooking” occurs when backing your hitch into a trailer that is set too high, resulting in the lower flange of the King Pin to wedge itself against the metal edge of the lower horseshoe piece or against the Lock Jaw Assembly. Damage to the Lock Jaw Assembly may result and not allow smooth operation of the closing mechanism.

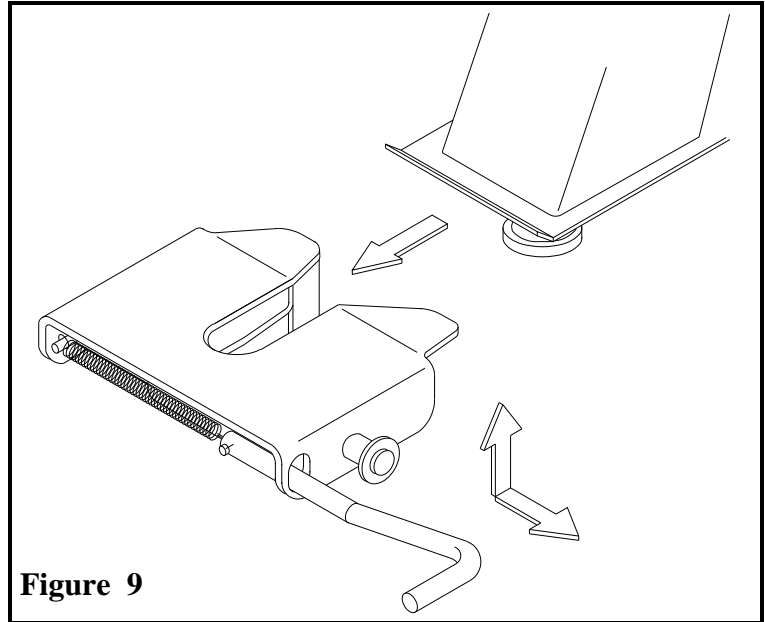


Figure 9

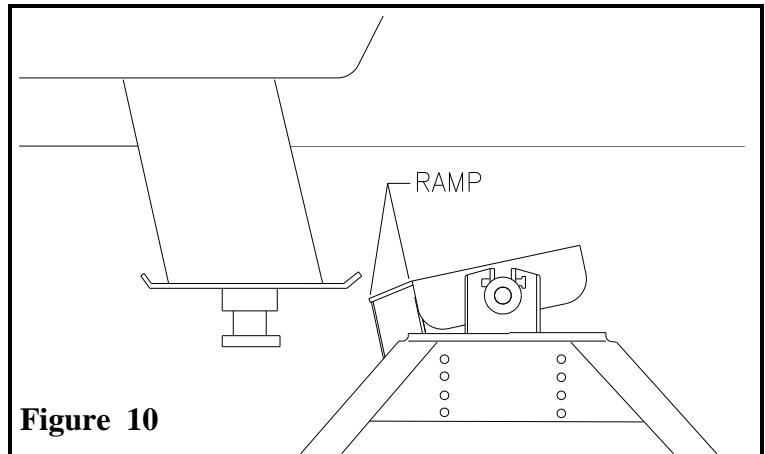


Figure 10

- 4) The Lock Jaw Assembly **(Figure 7)** must be in the unlocked position, see step 2 page 7. **Damage will result should you attempt to hitch up with the Lock Jaw Assembly in the closed position.**
- 5) Back the truck so that the King Pin enters the center of the horseshoe slot of the 5th Wheel Plate (1) **(Figure 9)**.
- 6) Be sure that the Release Handle has fully returned to the closed position. See step 4 page 7.

SAFETY CHECKS: Perform the following Safety Checks at this time:

- 1) Shine a light on the Lock Jaw Assembly making sure it has closed around the King Pin.
- 2) Pull the Release Handle towards you **without** lifting it up. If the Lock Jaw Assembly is completely closed the Handle Catch will prevent you from being able to pull the Release Handle out.
- 3) Raise the trailer jack base plates just above the ground, lock your trailer brakes, then pull the tow vehicle slowly forward putting a strain on the trailer.
- 4) When you are assured that the trailer is safely hitched up, raise your trailer jacks into their full retracted position, connect the trailer electrical cable, trailer break-away cable and close the truck tail gate.

YOU ARE NOW READY TO TRAVEL.

UNHITCHING

- 1) Once you have the trailer located and are ready to unhitch, block the trailer wheels so it will not roll in either direction. Back into the blocked trailer slightly and set the parking brake while the truck is still in gear. This action will relieve pressure on the Lock Jaw Assembly before attempting to pull the Release Handle.
- 2) Lower the trailer jacks to the point of just touching the ground but do not raise the trailer at this point.
- 3) Open the Lock Jaw Assembly by first lifting, then pulling the Release Handle towards you. See **(Figure 8)** page 7.
- 4) Lower the trailer jacks until the bottom of the King Pin Box is almost free of the top of the 5th Wheel Plate (1). Make certain that the bottom of the King Pin is **not** so high that binding on the hitch Lock Jaw Assembly would result.
- 5) After lowering the truck's tail gate, disconnect the trailer electrical cord and break-away cable, then pull forward.
- 6) As the King Pin slides from the Plate (1), notice that the Lock Jaw Assembly remains open.

CAUTION: You may wish to keep the plate closed until you are ready to re-hitch to avoid injury or accidents to anyone tempted to operate the Plate (1) mechanism. Use a probe to trip the Lock Lever and close the Lock Jaw Assembly, do not use your hands.

CHALLENGE vs. SOLUTION

The following comments deal with situations that will assist you in operating your new PULLRITE SUPER 5TH

CHALLENGE	SOLUTION
Cannot open the Release Handle.	<p>You may have too much rearward pressure against the Lock Jaw Assembly. Back your truck into your blocked trailer to relive the pressure and continue the unhitching procedures. See step 1 this page.</p> <p>You may also have raised the trailer jack too high, causing the King Pin to bind on the bottom of the Lock Jaw Assembly.</p>
Trailer overhang is hitting the bed rails when the trailer and truck are at sharp angles.	Raise the 5th Wheel Plate (1) height and or lower the King Pin Box. There should be at least 6" between the top of the bed rails and the bottom of the trailer.
The Release Handle mechanism seems too stiff to operate.	Turn the Plate (1) upside-down and spray all of the moving parts with WD-40. Work the Release Handle until it slides freely.
I need to have a professional evaluate my Super 5th.	Contact PullRite's Customer Service Department at 800/443-2307. Your needs will be assessed and resolved by PullRite or you will be directed to an authorized PullRite Service Center.

FIVE YEAR LIMITED WARRANTY

PULLIAM ENTERPRISES, INC. hereinafter referred to as “**PULLIAM**”, warrants to the first retail owner only, this PullRite towing system to be free from defects in materials and workmanship for a period of five (5) years after the installation on purchaser’s vehicle.

To validate this warranty, the first retail owner must mail the provided warranty card to **PULLIAM** within ten (10) days after installation of said towing system on his vehicle.

The owner is responsible for all normal and preventive maintenance described in the Owner’s Instructions.

If any defect occurs which the owner believes is covered by this warranty within said five (5) year period, the owner shall contact **PULLIAM** immediately, either in writing or by telephone call, Attention Customer Service Department. The owner will be instructed to return the hitch at his expense either to an authorized PullRite dealer or to **PULLIAM** to repair or replace any parts necessary to correct defects in material or workmanship.

Repair or replacement shall be at the sole option of **PULLIAM** and shall be completed by or on behalf of **PULLIAM** free of charge for materials and labor.

This warranty gives you specific legal rights, and you may also have other right’s which vary from state to state.

THIS WARRANTY SPECIFICALLY EXCLUDES EACH OF THE FOLLOWING:

1. Defects in the product resulting from misuse, neglect, accident, loading beyond the vehicle’s capacity, failure to comply with instructions contained in the Owner’s Instruction or unauthorized repairs, replacements, alterations or modifications. “Unauthorized repair, replacements, alterations” are those made without **PULLIAM’S** prior knowledge and consent.
2. Any incidental or consequential damage including, but not limited to, loss of use of the vehicle, towing charges, vehicle rental, loss of time, inconvenience, travel, gasoline, lodging and telephone expenses, loss of revenue and damages on account of personal injury and property damage. (Some states do not allow the exclusion or limitation of incidental or consequential damages, so these limitations may not apply to you).
3. Repairs or replacements of defects in any PullRite towing system, or part thereof, installed on any vehicle which has been rented, leased or used for any commercial purpose.
4. Any representation, warranty of undertaking made by any dealer or third party beyond the scope of the warranty herein expressed.
5. Any problem resulting in normal deterioration due to wear or exposure.

TO THE EXTENT PERMITTED BY LAW, IMPLIED WARRANTIES OF MERCHANTABILITY AND FITNESS FOR A PARTICULAR PURPOSE ARE LIMITED IN DURATION TO FIVE YEARS FROM THE DATE OF INSTALLATION ON THE FIRST OWNER’S VEHICLE. (SOME STATES, HOWEVER, DO NOT ALLOW LIMITATIONS AS TO DURATION OF IMPLIED WARRANTY, SO THOSE LIMITATIONS MAY NOT APPLY TO YOU)

PULLRITE TRAILER TOWING SYSTEMS **MANUFACTURED BY:**

PULLIAM ENTERPRISES, INC.
13790 East Jefferson Blvd.
Mishawaka, IN 46545
(574) 259-1520 or (800) 443-2307
info@pullrite.com • www.pullrite.com





WARRANTY REGISTRATION

Failure to complete this form may cause an invalidation of the manufacturer's warranty.

FULL NAME *(please print)*:

ADDRESS

CITY, STATE & ZIP CODE

PHONE

PURCHASE DATE

NAME OF DEALER WHERE PURCHASED

PURCHASE PRICE

CITY & STATE

WHAT INFLUENCED YOUR PURCHASE?

- Advertisement
- Dealer Recommendation
- Product Video
- Manufacturer's Reputation
- Friend
- Other *(please specify)*:

PLEASE CHECK ITEM(S) PURCHASED:

- 12k SuperGlide
- 14k SuperGlide
- 18k SuperGlide
- 24k SuperGlide
- 15.5 Super 5th
- 20.5 Super 5th
- 25.5 Super 5th
- 25.5 Low Profile Super 5th
- 70°, 10k PullRite
- 90°, 10k PullRite
- 70°, 20k PullRite
- 90°, 20k PullRite
- Telescoping PullRite
- Other *(please specify)*:

COMMENTS:
