



Universal Mounting Kit #0820



Installation Instructions

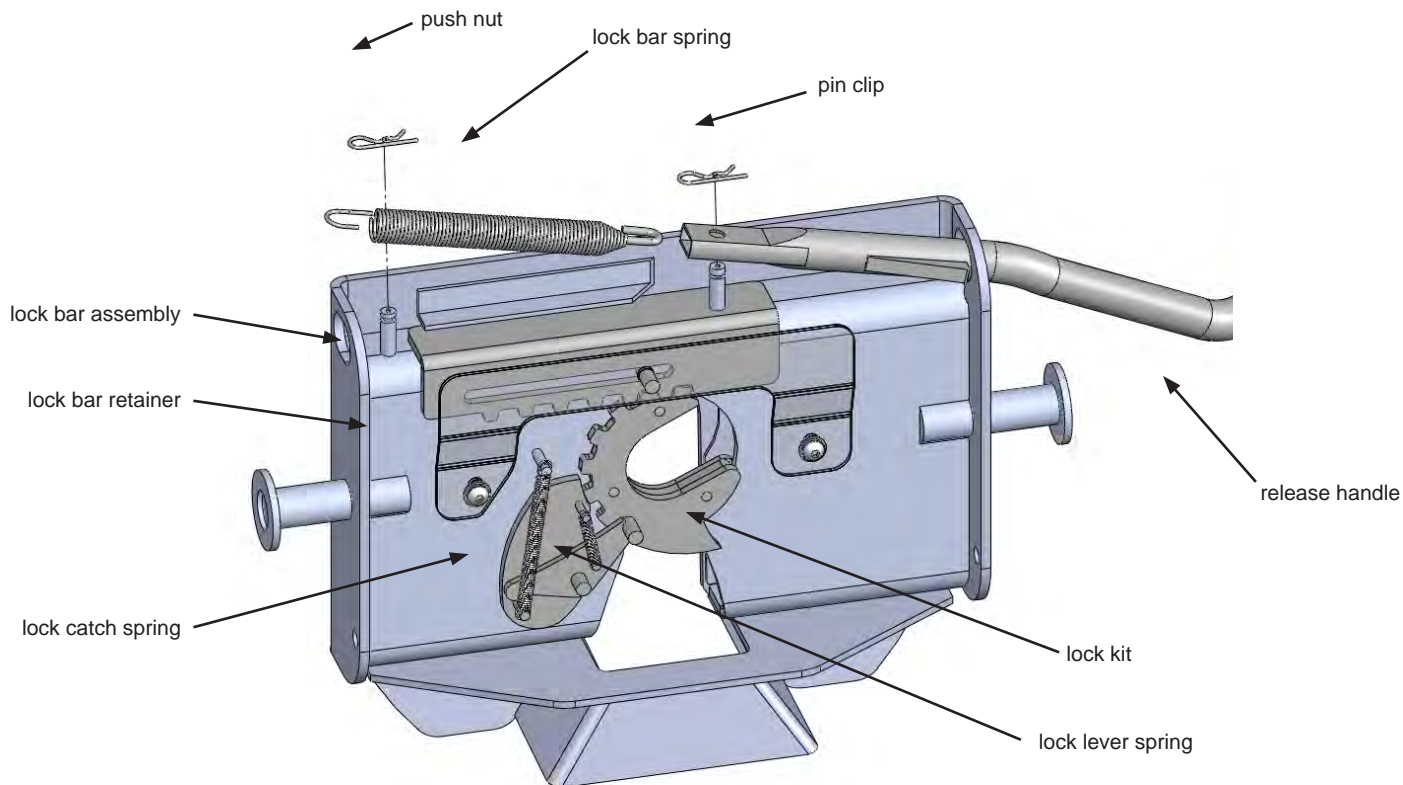
The following instructions cover detailed installation instructions for the following vehicles:

- 1997 - 2003 Ford Light Duty F150
- 1999 - 2015 Ford F250 & F350
- 1995 - 2002 Dodge 1500-3500 (*excludes 2002, 1500*)
 - 2002 - 2008 Dodge 1500
- 1988-1998 Chevy / GMC 1500-3500 (*tapered frame*)
- 1999 - 2000 Chevy / GMC 2500-3500 (*tapered frame*)
- 1999-2000 Chevy / GMC 1500-3500 Light Duty (*offset frame*)
- 2001-2010 Chevy / GMC 1500-2500 LD & HD (*offset frame*)
 - 2011-2015 Chevy 2500 & 3500

TABLE OF CONTENTS

PLATE ASSEMBLY.....	3
#1200 HITCH ASSEMBLY — EXPLODED VIEW	4
#1200 HITCH ASSEMBLY & PARTS LIST	5
#0800 HITCH ASSEMBLY — EXPLODED VIEW	6
#0800 HITCH ASSEMBLY & PARTS LIST	7
MOUNTING KIT PARTS LIST	8
TRUCK PREPARATION.....	9
MARKING THE TRUCK BED FOR DRILLING.....	10
LAYOUT METHOD	10
TEMPLATE METHOD	11
INSTALLATION	12

PLATE ASSEMBLY

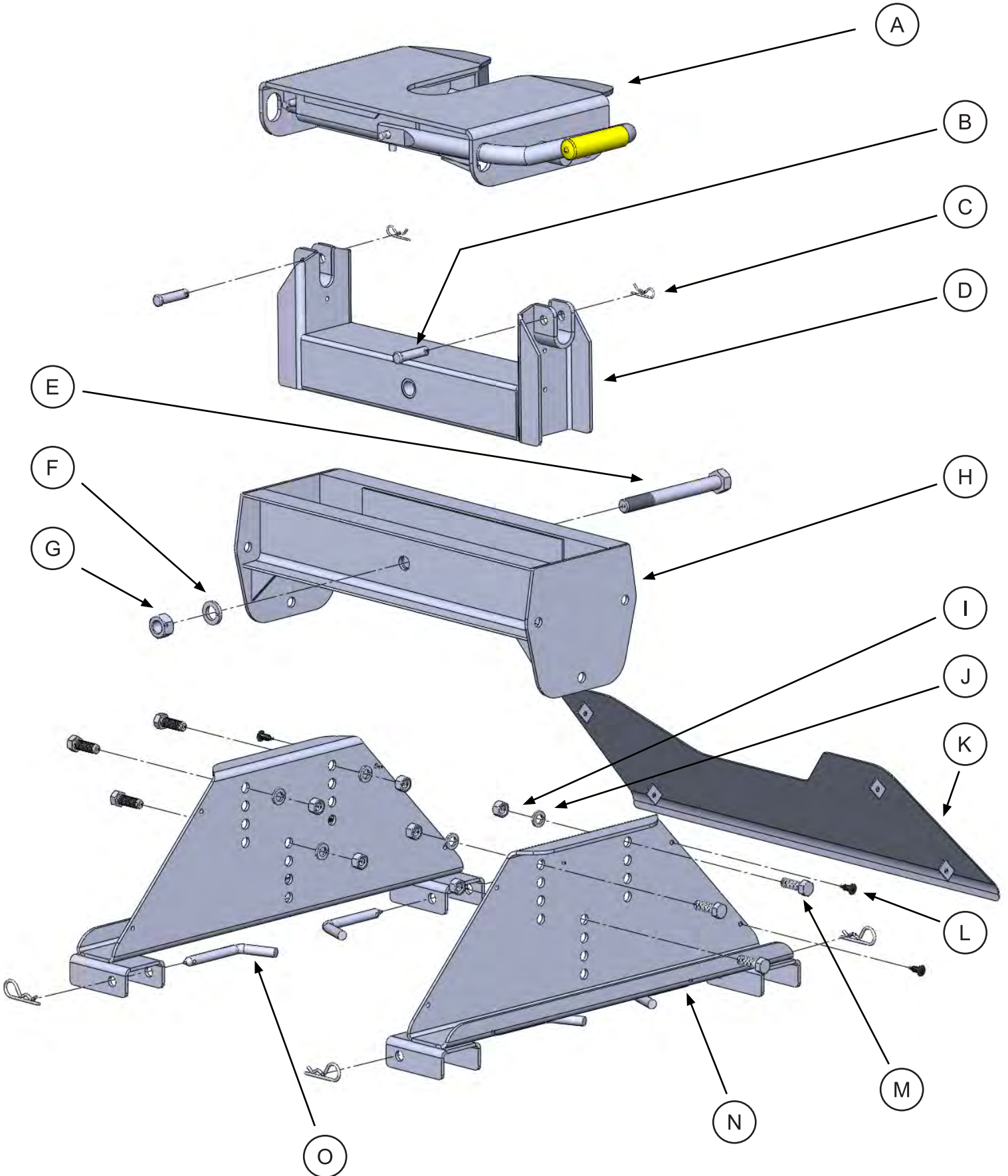


1. Remove the Fifth Wheel Plate from the Rocker Arm and place it upside down on a smooth, clean surface.
2. Insert the Release Handle into the obround hole of the plate as seen above.
3. The Lock Bar Spring must be placed inside the handle prior to placing the handle down over the pin of the Lock Bar Assembly, "catching" the hook inside the handle around the pin.
4. Push the handle and spring assembly down past the groove in the pin of the Lock Bar Assembly, and place the Pin Clip in the groove of the pin to fasten.
5. Grip the body of the spring and stretch it far enough over the opposite pin (welded to the plate) and push it down past the groove.
6. Install the Push Nut to secure the Lock Bar Spring onto the welded pin.

As a PullRite fifth wheel hitch owner, it is important for you to study and manually operate the Fifth Wheel Plate and Release Handle to better understand the locking action. A better working knowledge of the plate will help prevent accidental dropping of your trailer due to incorrect hitching.

Also, it is imperative that you study and adhere to the Maintenance procedures provided in the Owners Manual. If you did not receive one upon purchase, please contact PullRite or visit us on the web at www.pullrite.com.

#1200 HITCH ASSEMBLY — EXPLODED VIEW



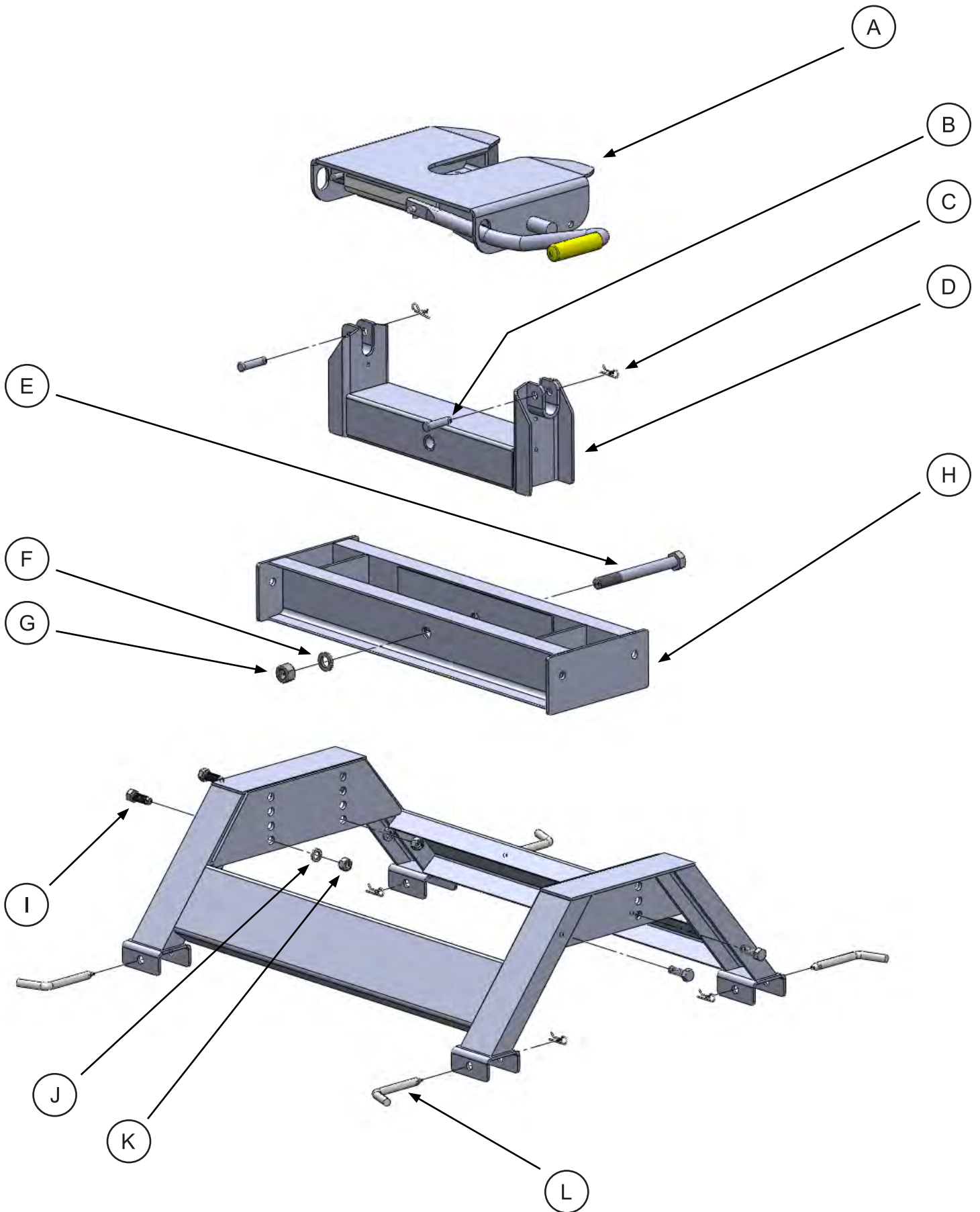
#1200 HITCH ASSEMBLY & PARTS LIST

1. Check part quantities using the Parts List.
2. Arrange the Base Rails parallel to each other and attach the Base Sides using the four 1/2" Base Rail Pins and four Pin Clips.
3. Remove the 3/4" x 7" Rocker Arm Pivot Bolt from the Rocker Arm and Crossmember. The Rocker Arm is shipped upside down in the Crossmember for better packaging and will need to be removed and reinstalled right side up in the Crossmember. Tighten the 3/4" x 7" Rocker Arm Pivot Bolt only enough so that the Rocker Arm will rotate stiffly. Lubricate the Rocker Arm Pivot Bolt with heavy grease before installing.
4. Fasten the Crossmember and Base Sides together using six each of the 1/2"-13 x 1 1/2" Bolts, 1/2" Lock Washers, and 1/2"-13 Hex Nuts. This hitch has four height settings; make certain to adjust the Rocker Arm Crossmember according to your truck and vehicle so you have a minimum of 6" between the top of the truck's bed sides and the bottom of your trailer. Attach the Base Cover Assembly to the Base Sides using the four Plastic Barbed Fasteners provided. The tabs welded to the Base Cover Assembly fit on the inside of the Base Sides. Tighten bolts to 75 foot pounds.

HITCH ASSEMBLY PARTS LIST

item	description	part no.	qty.	material
A	FIFTH WHEEL PLATE	3601	1	
B	CLEVIS PIN	98410111	2	
C	PIN CLIP	98410127	6	#3 PIN CLIP
D	ROCKER ARM	0802	1	
E	ROCKER ARM PIVOT BOLT	98010147	1	
F	ROCKER ARM LOCK WASHER	98200124	1	3/4" SPLIT LOCK WASHER
G	ROCKER ARM HEX NUT	98150131	1	3/4" - 10 HEX NUT
H	ROCKER ARM CROSSMEMBER	1202	1	
I	1/2" HEX NUT	98150153	6	1/2" - 13 HEX NUT
J	1/2" LOCK WASHER	98200142	6	1/2" LOCKWASHER
K	BASE COVER	120302	1	
L	PLASTIC BARBED FASTENER	98410560	4	
M	1/2" X 1-1/2" FRAME BOLT	98010167	6	1/2" - 13 X 1-1/2" HHCS GRD 5
N	BASE SIDE	120301	2	
O	BASE RAIL PINS	08060001	4	1/2" ROUND

#0800 HITCH ASSEMBLY — EXPLODED VIEW



#0800 HITCH ASSEMBLY & PARTS LIST

If the hitch type to be installed is a 20,500 (Part #0800), there is no assembly required except to attach the Base Rails to the base feet of the hitch Base using the four 1/2" Base Rail Pins and four Pin Clips.

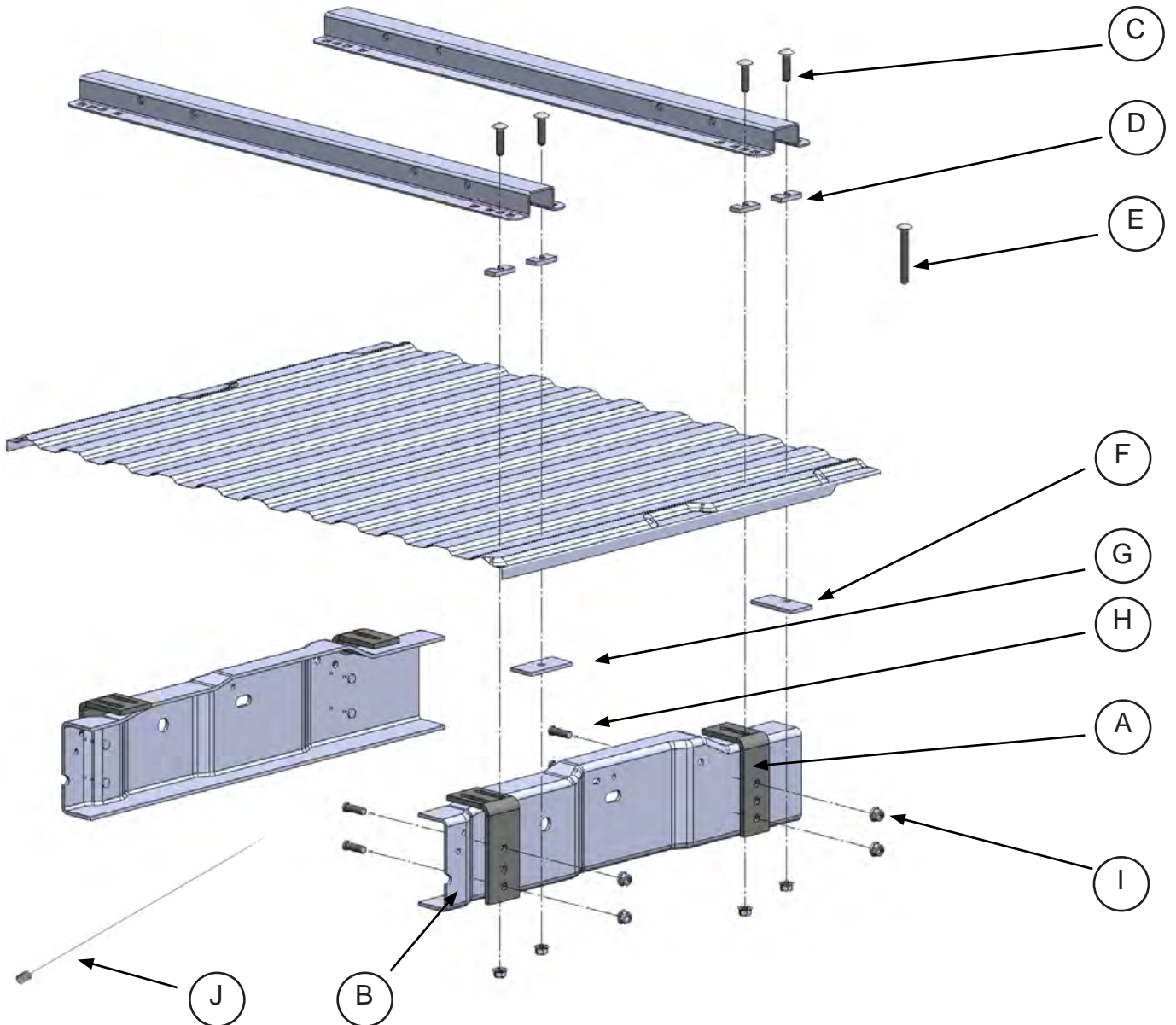
This hitch has four height settings; make certain to adjust the Rocker Arm Crossmember according to your truck and vehicle so you have a minimum of 6" between the top of the truck's bed sides and the bottom of your trailer. Be sure to torque all four 1/2" x 1 1/2" Bolts to 75 foot pounds.

HITCH ASSEMBLY PARTS LIST				
item	description	part no.	qty.	material
A	FIFTH WHEEL PLATE	3601	1	
B	CLEVIS PIN	98410111	2	
C	PIN CLIP	98410127	6	#3 PIN CLIP
D	ROCKER ARM	0802	1	
E	ROCKER ARM PIVOT BOLT	98010147	1	
F	ROCKER ARM LOCK WASHER	98200124	1	3/4" SPLIT LOCK WASHER
G	ROCKER ARM HEX NUT	98150131	1	3/4" - 10 HEX NUT
H	ROCKER ARM CROSSMEMBER	0803	1	
I	1/2" BASE BOLT	98010167	4	1/2" - 13 X 1-1/2" HHCS GRD 5
J	1/2" BASE LOCK WASHER	98200142	4	
K	1/2" BASE HEX NUT	98150153	4	1/2" - 13
L	BASE RAIL PINS	08060001	4	1/2" ROUND

MOUNTING KIT PARTS LIST

080702— MOUNTING BRACKET HARDWARE KIT

item	description	part no.	qty.	material
A	SINGLE SLOT MOUNTING BRACKET	08070001	2	
B	DOUBLE SLOT MOUNTING BRACKET	08070002	2	
C	BASE RAIL CARRIAGE BOLTS	98050110	8	1/2"-13 X 2 CARRIAGE BOLT GRD 5
D	SLOTTED BED SHIM	08070201	8	5/16" SLOTTED SHIM
E	1/2" X 5" CARRIAGE BOLT	98050128	2	1/2"-13 X 5" SHAKER BOLT GRD 5
F	OFFSET-HOLE BACKUP PLATE	05070303	2	4" OFFSET HOLE BACKUP PLATE
G	CENTER-HOLE BACKUP PLATE	05070302	4	4" CENTER HOLE BACKUP PLATE
H	1/2" SPLINE BOLT	98410192	8	
I	1/2" FLANGE NUT	98150201	16	1/2"-13 SERRATED FLANGE NUT
J	1/2" BOLT LEADER	98340197	1	1/2" BOLT LEADER



TRUCK PREPARATION

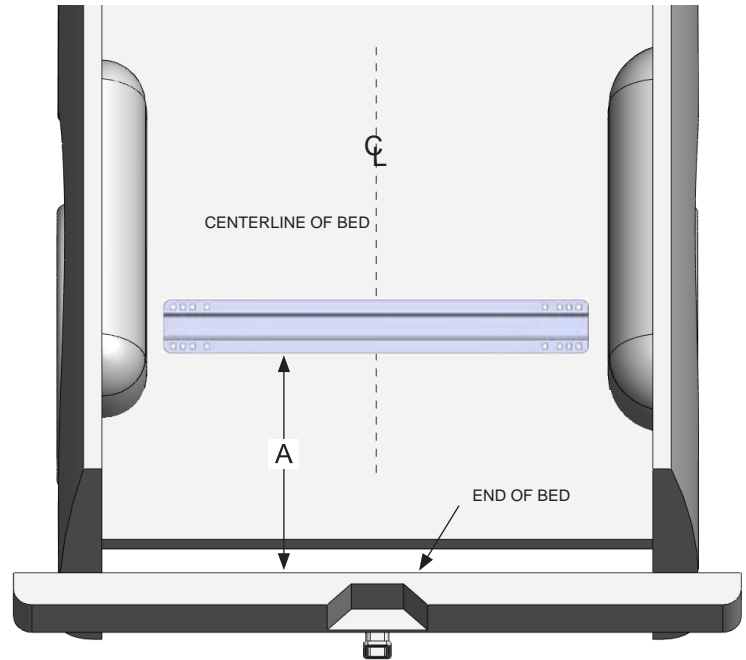
1. Block vehicle wheels. Some vehicles may require you to raise the rear of the truck in order to make it easier to drill for installing the mounting brackets on the truck frame.
2. Remove the spare tire and set aside.
3. You may wish to remove the wheels to give yourself greater working room.

MARKING THE TRUCK BED FOR DRILLING

LAYOUT METHOD

If you purchased an installation template, please proceed to "TEMPLATE METHOD". *Templates are sold separately.*

1. Find the centerline of the bed.
2. Draw a line down the middle of the bed from front-to-rear.
3. Referencing the "Truck Bed Dimension Table," measure and mark the value for "A" from the end of the bed forward toward the cab. Do this at any point on both sides of the centerline of the bed.
4. Draw a line across the bed from mark to mark.
5. Attach the base rails to the hitch and set in the bed of the truck, checking for correct orientation (open end of the hitch plate facing outward toward the rear of the bed).
6. Place the back edge of the rear base rail along the line you made in Step 4.
7. Measure from side-to-side in the bed to ensure you are as centered as possible.
8. Proceed to the "Installation" section.



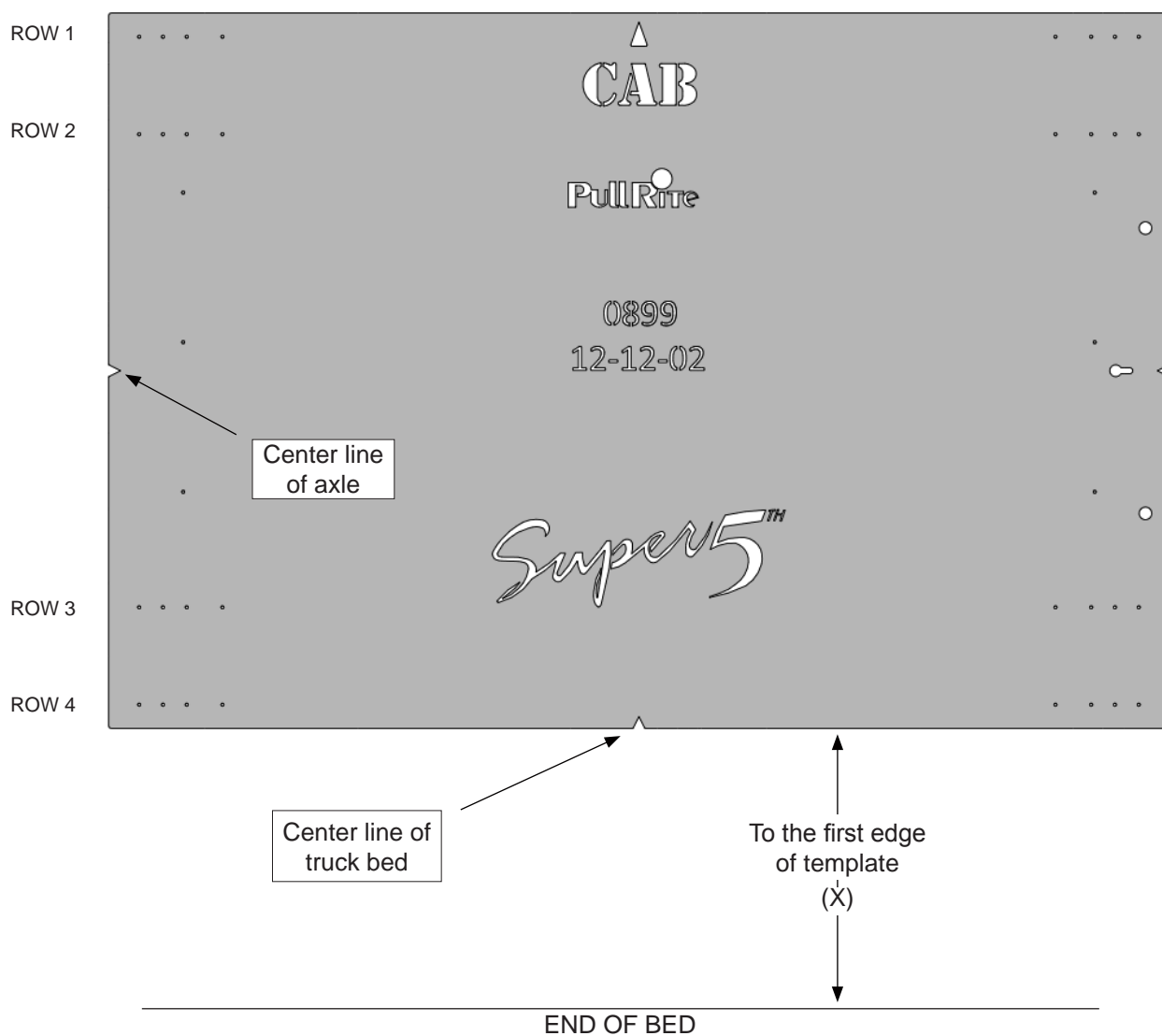
TRUCK BED DIMENSION TABLE

YEAR	MAKE AND MODEL	BED LENGTH	"A"	"X"	Distance Ahead of Axle
1997-2003	Ford Light Duty F150	6'	26-9/16"	26-5/16"	7/16"
		8'	26-9/16"	26-5/16"	7/16"
1999-2015	Ford F250-F350	6'	29-9/16"	29-5/16"	1-3/16"
		8'	31-7/16"	31-3/16"	3-1/16"
1995-2002	Dodge Ram 1500-3500 <i>(excludes 2002, 1500)</i>	6'	25-9/16"	25-3/8"	3/8"
		8'	31-7/8"	31-5/8"	2-9/16"
2002-2008	Dodge Ram 1500	6'	25-9/16"	25-5/16"	1/8"
		8'	30-5/8"	30-3/8"	3-3/16"
1988-1998	Chevy / GMC 1500-3500 <i>(tapered frame)</i>	6'	24-5/32"	23-5/16"	0"
		8'	29-1/4"	28-31/32"	2-1/4"
1999-2000	Chevy / GMC 2500-3500 <i>(tapered frame)</i>	6'	24-5/32"	23-15/16"	0"
		8'	29-1/4"	28-31/32"	2-1/4"
1999-2000	Chevy / GMC 1500-3500 Light Duty <i>(offset frame)</i>	6'	23-3/4"	23-1/2"	0"
		8'	30-31/32"	30-3/4"	2-3/8"
2001-2010	Chevy / GMC 1500-2500 LD & HD <i>(offset frame)</i>	6'	23-3/4"	23-1/2"	0"
		8'	30-31/32"	30-3/4"	2-3/8"
2011-2015	Chevy / GMC 2500-3500	6'	23-23/32"	23-1/2"	0"
		8'	28-9/16"	28-7/16"	0"

TEMPLATE METHOD

1. Lay the template in the truck bed, centering it from side-to-side, and parallel to the end of the truck bed using the dimension “X” listed in “Truck Bed Dimension Table.”
2. Mark all 8 bolt hole locations as indicated on the following “Installation” pages, according to your make and model vehicle, being careful not to let the template move (*see tip below*).
3. Proceed to the “Installation” section.

INSTALLATION TIPS: The **TEMPLATE** should be orientated as shown in the drawing below. To avoid drilling holes in error from out of tolerance bed-to-frame dimensions, mark the hole locations as lightly as possible if a center or transfer punch is used. Then use a very small diameter drill bit to drill one location on either side of bed. Place the Mounting Brackets against the frame to determine the correctness of the bed hole locations relative to the pre-punched holes in the Mounting Bracket and existing frame holes. Adjust the template pattern relative to the end of the bed, as necessary, to move the bed holes nearer the center of the mounting bracket holes. Note also, the information etched into the template — the direction of the cab, the template number and the revision date. As one last measure, the template has a tendency to move when placed on the slick paint of new truck beds, and it may be helpful to place a small piece of **NON-SKID** matting, such as “**SCOOT-GARD**”™ or simply use duct tape on each corner to help keep the template from moving.



INSTALLATION

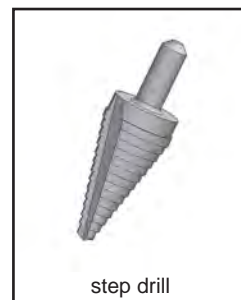
- Using a very small diameter bit, drill a pilot hole down the center of each bolt hole location, being careful to only drill down far enough to go through the bed.

WARNING: We have provided the bolt hole locations below and on the following page as a pre-tested guide for the best location of your new hitch; however *it is the responsibility of the installer to confirm the validity of these specific locations.* Vehicle manufacturers are frequently changing their frame designs, creating various obstructions such as brake lines, shock absorbers, rivets, etc. If you find such an obstruction, carefully read the instructions below as they will advise you how to maneuver around such obstructions.

- Leaving the bit in place, hold the driver side rear mounting bracket in position against the frame and the bottom of the bed.
 - Does the drill bit line up with the center of the horizontal slot in the Mounting Bracket?

If so, perform the same procedure for the other three holes where Mounting Brackets are to be positioned.

If not, or if it is not close enough to be usable, then adjust the location of the hitch in the bed or the selected Base Rail hole location as needed. Repeat this procedure on all mounting brackets until you are satisfied with the results.



- Remove the hitch from the bed of the truck. Drill each of the marked hole locations, using a step drill of at least 3/4" diameter. (A step drill is a cone shaped bit that has a variety of gradually larger diameter sizes the deeper the drill is used – see right) The 3/4" holes will be covered by the Base Rails and will make the installation easier than if a 1/2" hole is used.
- Place the hitch back over the top of the drilled holes after removing the drill shavings from the bed and treating the holes with a suitable rust inhibitor.
- Install a 1/2"-13 x 2" Carriage Bolt {C} through each hole. For those hole locations that may encounter a bed cross sill, drill the bottom of the cross sill with a 9/16" drill bit, then install a 1/2"-13 x 5" Carriage Bolt {E} (see illustration on "Mounting Kit Parts List").
- Clamp each Mounting Bracket flush to the side of the frame, and fasten them to the bottom of the bed using the Slotted Bed Shims {D} to fill the bed channel (bed shims keep the bed channels from collapsing when the bolts are tightened), Center {G} and Offset {F} Backup Plates, and Flange Nuts {I} (see "Mounting Kit Parts List"). The backup plates are simply large washers meant to provide a larger surface contact than a standard flat washer; the Offset hole Backup Plate is provided where clearance around obstacles is a problem.
- Tighten these bolts to 75 foot pounds. *Tighten any bolts that may pass through a bed cross sill to only 40 foot pounds to prevent crushing the cross sill.*
- Drill two 1/2" holes in the frame for each Mounting Bracket using the pre-punched holes as a guide. Select the top and bottom holes of the mounting bracket if possible, resulting in the widest spread.

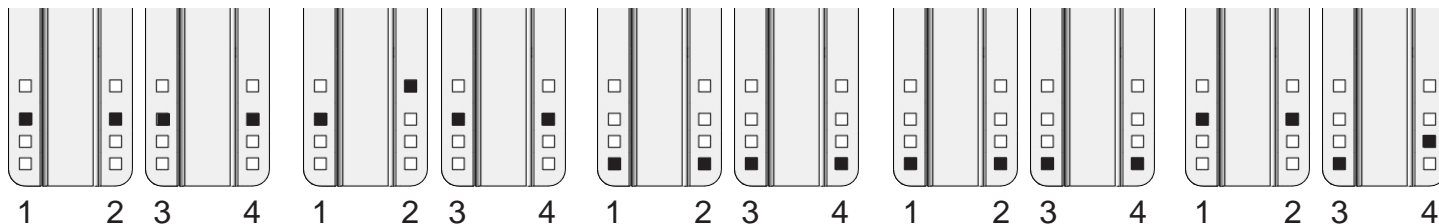
2002-2008
8' BED
DODGE
1500

2002-2008
6' BED
DODGE
1500

1984-2002
6' & 8' BED
DODGE
(EXCLUDES 2002 1500)

1999-2015
6' & 8' BED
FORD
SUPER DUTY

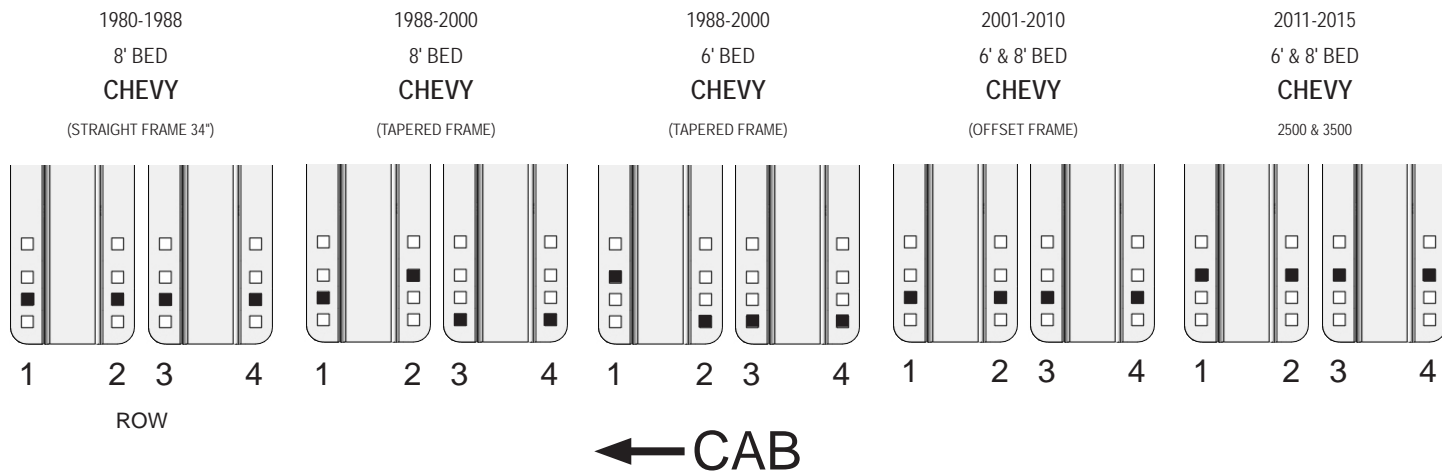
1997-2003
6' & 8' BED
FORD
LIGHT DUTY (TAPERED FRAME)



ROW

← CAB

INSTALLATION

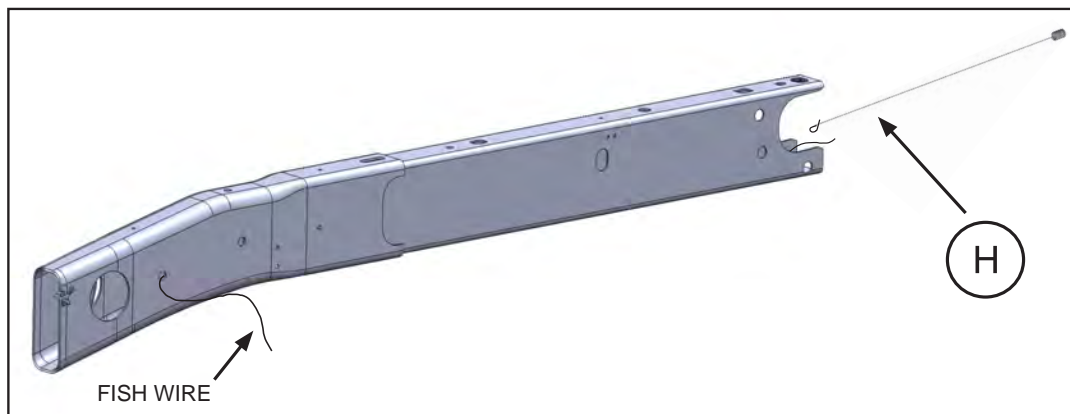


WARNING: Before drilling, check the inside of the frame to guard against drilling into wiring or lines. Be sure to protect the fuel tank from possible puncture.

- Depending on the make and model of your truck, the truck frame may be partially or entirely enclosed (see example below). To install the 1/2" Spline Bolts {H} in an enclosed frame, they must be "fished" through the frame. With the bracket clamped in place, thread a long fish wire (not provided) through any of the holes you've drilled out, threading the wire rearward to the end of the frame.
- Once the wire reaches the rear frame opening, bend the end of the provided bolt leader to make an eyelet, and attach the fish wire to the leader.

Installation Tip: Prior to threading the anti-rotation bolt into the leader, thread the 1/2" Flange Nut {I} on and off the bolt to assure that the nut will fit easily once the bolt is in place.

- Thread an anti-rotation bolt into the provided bolt leader and pull it through the drilled hole.
- Fasten each Mounting Brackets to the frame using two 1/2" Spline Bolts and 1/2" Flange Nuts {I}, and torque to 75 foot pounds.



TORQUE TABLE	
3/8" bolt	— 31 ft. lbs.
1/2" bolt	— 75 ft. lbs.
5/8" bolt	— 151 ft. lbs.
3/4" bolt	— 266 ft. lbs.