



Super 5th Towing Solutions

INSTALLATION INSTRUCTIONS

SPECIFICATIONS:

16,000 Super 5th , (Part #1200)	
Gross Trailer Weight (Maximum).....	16,000 lbs.
Vertical Load Weight (Max. Pin Weight).....	4,000 lbs.
20,500 Super 5th , (Part #0800)	
Gross Trailer Weight (Maximum).....	20,500 lbs.
Vertical Load Weight (Max. Pin Weight).....	5,125 lbs.

FOR USE WITH
2003-2008 DODGE, 2500, 3500 TRUCKS
HITCH IS LOCATED CENTER OF THE AXLE
CUSTOM MOUNTING BRACKETS (Part # 0817)
CUSTOM MOUNTING KIT (PART # 0828)

Introduction

The following steps provide several pages of general instruction for the installation of the **16,000# (part number 1200)** and **20,500# (part number 0800) SUPER 5TH** towing system. Should you have any questions, please call the factory at (800) 443-2307 for installation assistance.

Index

	<u>Page</u>
Introduction	1
Parts List For 20,500# Hitch	2
Parts List For 16,000# Hitch	3
Parts List For Custom Mounting Bracket & Tools Needed for Installation	4
Super 5th Preparation, Vehicle Preparation & Laying Out and Marking the Bed	5
Installation Tip & Drilling the Bed	6
Hitch Assembly & Hitch Installation	7
Hitch Installation	8 & 9
Illustrations & General Comments	10

Parts List For 20,500 Super 5th Hitch

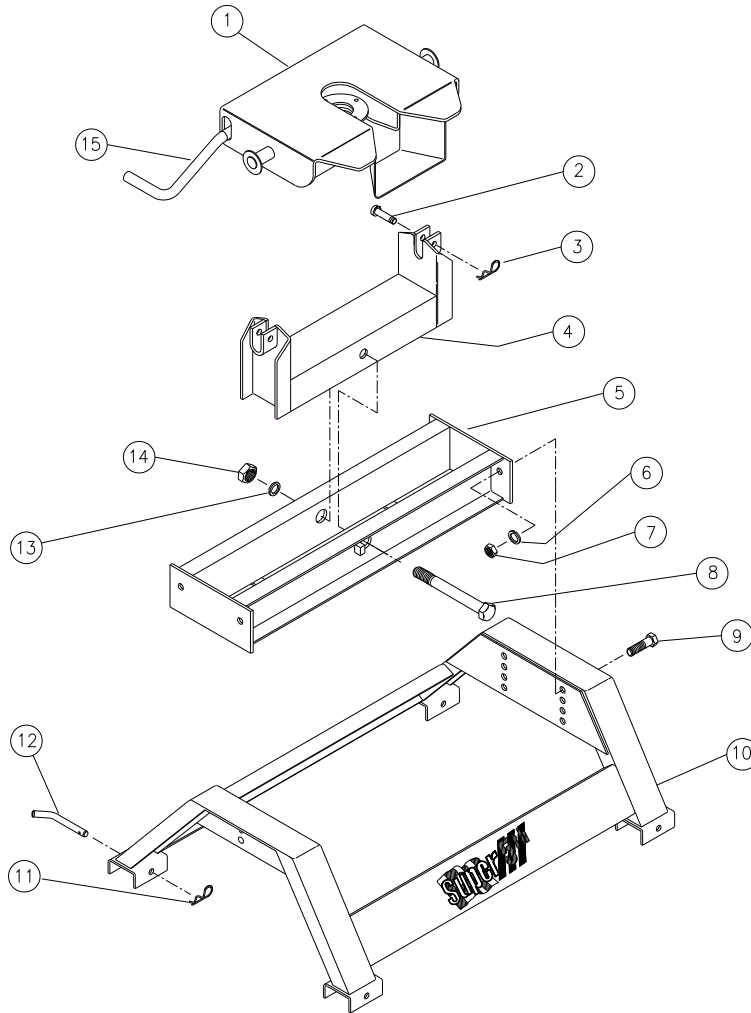


Fig. 1.

Ref	Item	Part #	Qty
1.	Fifth Wheel Plate	3601	1
2.	1/2" Clevis Pin	98410111	2
3.	#3 Pin Clip	98410127	2
4.	Rocker Arm	0802	1
5.	Crossmember	0803	1
6.	1/2" Lock washer	98200142	4
7.	1/2"-13 Hex Nut	98150153	4
8.	3/4" x 7" Pivot Bolt	98010147	1
9.	1/2"-13 x 1 1/2" Bolt	98010167	4
10.	Base	0804	1
11.	#3 Pin Clip	98410127	4
12.	1/2" Base Rail Pin	08060001	4
13.	3/4" Lock washer	98200124	1
14.	3/4"-10 Hex Nut	98150131	1
15.	Release Handle	350104	1

Parts List For 16,000 Super 5th Hitch

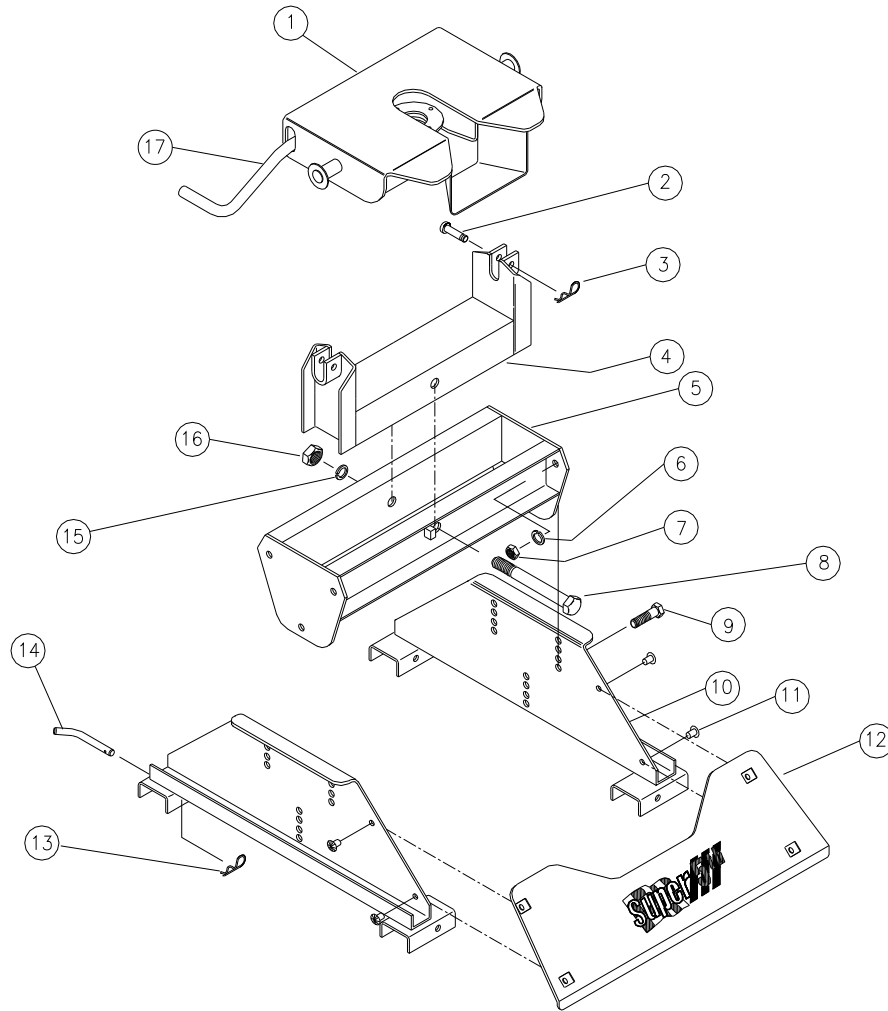


Fig. 2.

Ref	Item	Part #	Qty
1.	Fifth Wheel Plate	3601	1
2.	1/2" Clevis Pin	98410111	2
3.	#3 Pin Clip	98410127	2
4.	Rocker Arm	0802	1
5.	Crossmember	1202	1
6.	1/2" Lock washer	98200142	6
7.	1/2"-13 Hex Nut	98150153	6
8.	3/4" x 7" Pivot Bolt	98010147	1
9.	1/2"-13 x 1 1/2" Bolt	98010167	6
10.	Base Side	120301	2
11.	Plastic Xmas Tree	98410560	4
12.	Base Cover	120302	1
13.	#3 Pin Clip	98410127	4
14.	1/2" Base Rail Pin	08060001	4
15.	3/4" Lock washer	98200124	1
16.	3/4"-10 Hex Nut	98150131	1
17.	Release Handle	350104	1

Parts List For Dodge Super 5th Custom Mounting Brackets

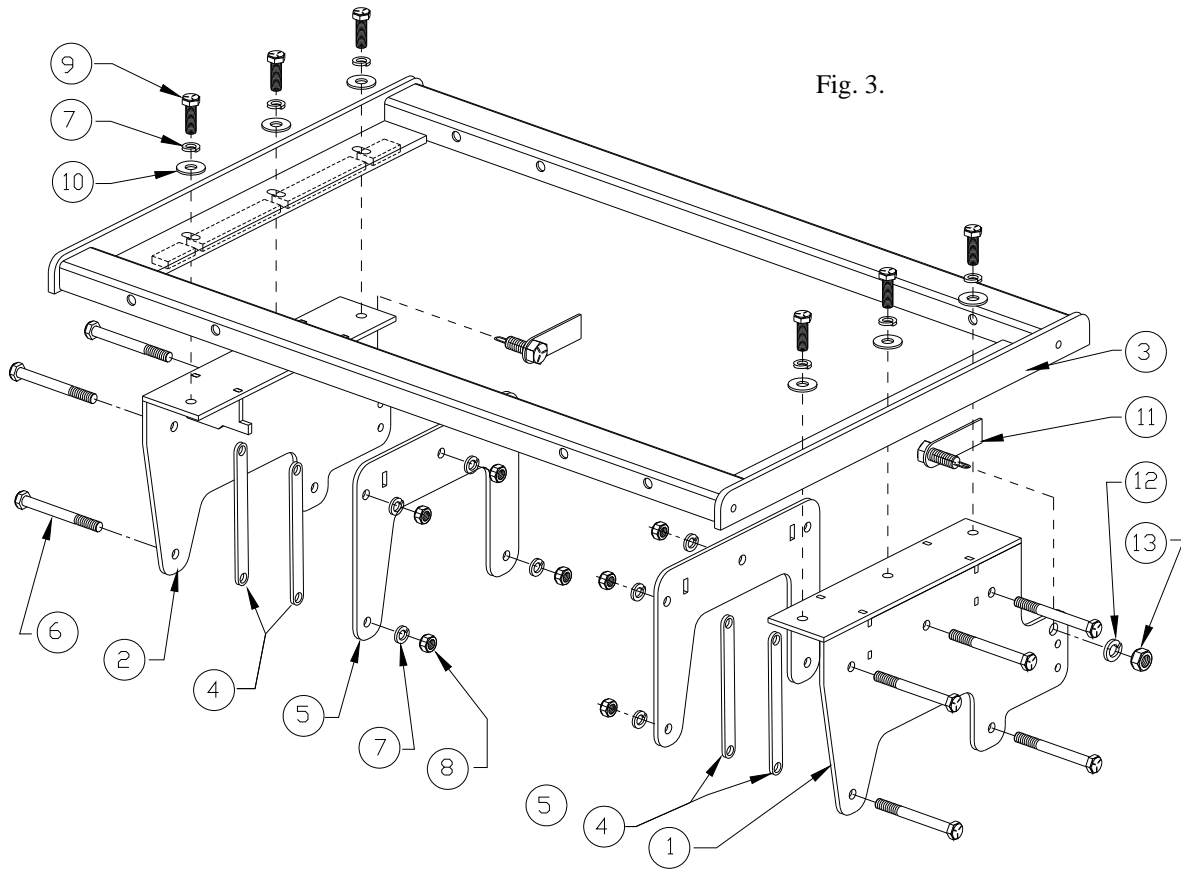


Fig. 3.

Ref.	Item	Part #	Qty
1.	Passenger Side Mounting Bracket	081702	1
2.	Driver Side Mounting Bracket	081701	1
3.	Base Rail Assembly	081704	1
4.	Frame Spacer	08170105	4
5.	Mounting Bracket Back Up Plate	08170104	2
6.	1/2"-13 x 4 1/2" HHCS Grd. 5	98010195	10
7.	1/2" Split Lock Washer	98050128	16
8.	1/2"-13 Hex Nut	98150153	10
9.	1/2"-13 x 1 1/2" HHCS Grd. 5	98010167	6
10.	1/2" Flat Washer	98250145	6
11.	Bolt Plate with 5/8"-11 x 1 1/2" Hex Bolt	081703	2
12.	5/8" Lock Washer	98200133	2

Tools Needed For Installation

1/2" Drill Motor
 1/8" & 1/16" Drill Bit
 1/2" Drill Bit
 3/4" Step Drill Bit

15/16" & 3/4" Socket
 1 1/8" Socket
 Torque Wrench
 Measuring Tape

1/2" Drive Impact Gun or 1/2"
 Drive Ratchet Wrench 3/4"
 Combination Wrench
 Felt Tipped Marker
 Hammer

VEHICLE PREPARATION

After blocking the front wheels, place jack stands under the frame so that the rear of the truck is high enough to allow the rear wheels to drop. This will give easy access to the frame area in the rear wheel well. Remove the emergency brake cable bracket located in the driver side wheel well, refer to figure 6 on page 6. Replace this bracket after installing the hitch mounting brackets. Find the electrical harness located on the inside of the driver side frame rail. Pull the plastic xmas tree fasteners loose from the frame in the area where the hitch mounting bracket will be located. Replace these fasteners after the hitch is installed. If the truck is a **two wheel drive**, remove the axle jounce bumper located just above the axle on the bottom of the frame, replace after the hitch is installed.

Laying Out and Marking the Bed

Template method to mark bed:

1. Place the rear edge of the template 27-5/32" (8' bed), 25-1/4" (6' bed) forward of the rear edge of the truck bed.
2. Center template in bed from left and right. Lineup the etched centerline with the centerline of the truck bed.
3. While standing on the template, use an 1/16" drill bit to mark the bed at each hole location (See figure 5 below).

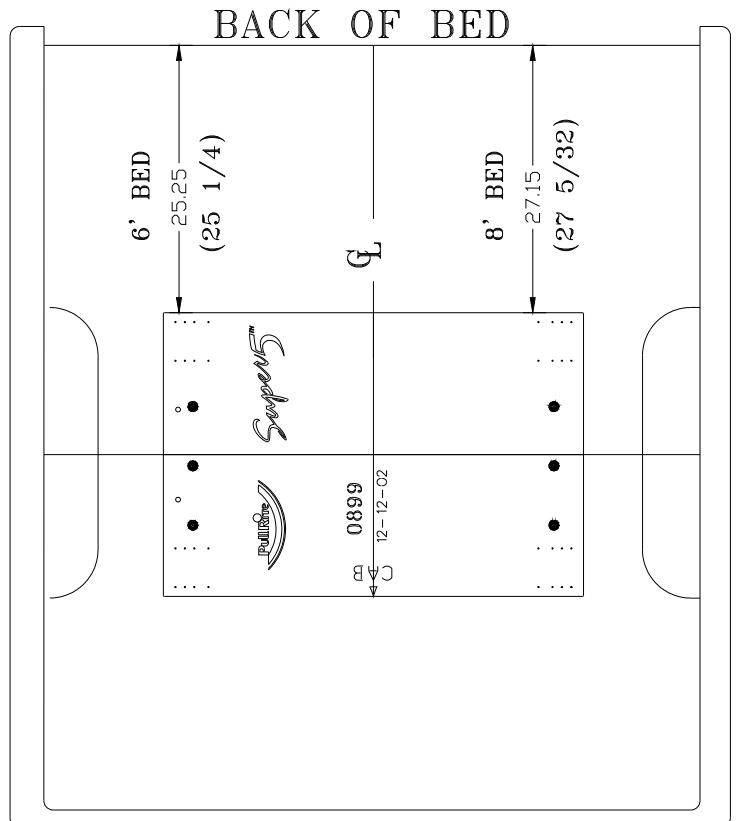
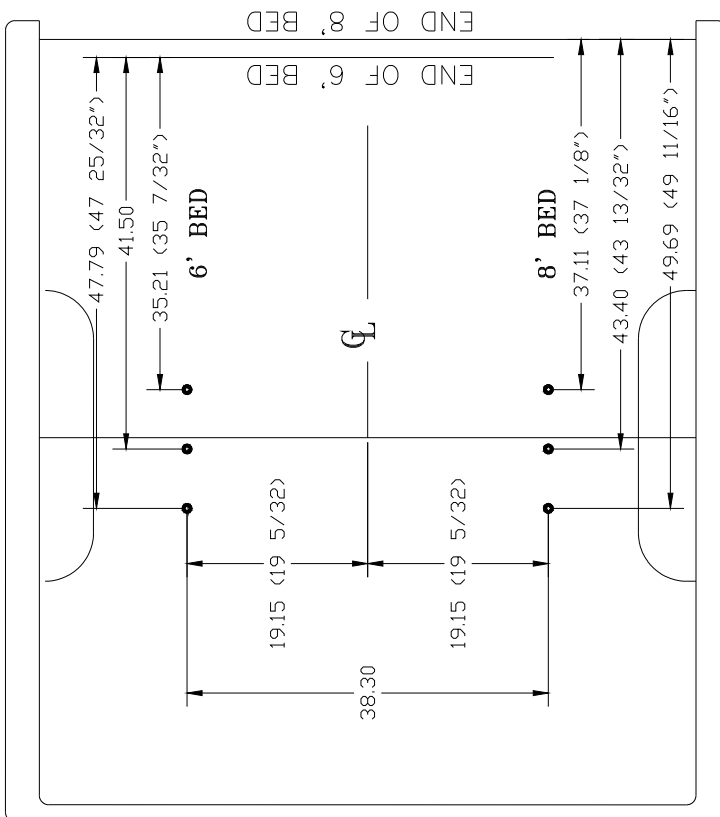
Ask your distributor sales representative about hole pattern templates (P/N: 0899).

Layout method to mark bed:

Using the dimensions shown in figure 4 below, draw layout lines in the bed using a straight edge and marker or chalk line. At intersections of marked lines, use a center punch to mark the bed.

Layout Method Fig. 4.

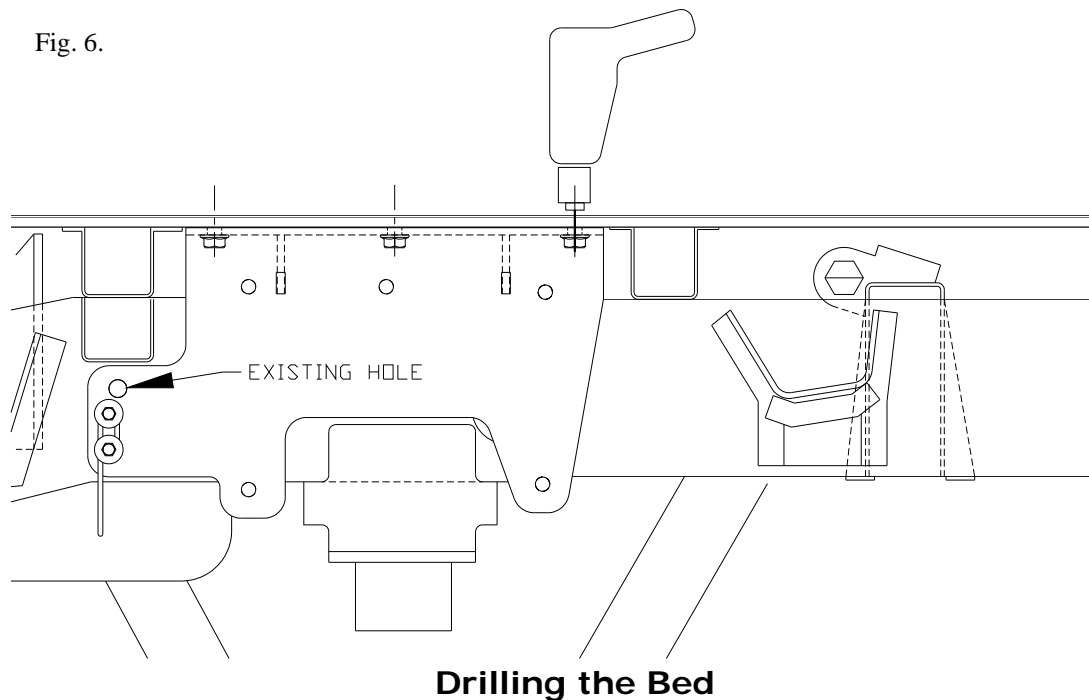
Template Method Fig. 5.



Installation Tips

To avoid drilling holes in error from out of tolerance bed to frame dimensions, mark the hole locations as lightly as possible if a center or transfer punched is used. Then use a very small diameter drill bit to drill one location on either side of bed. Place the Mounting Brackets against the frame to determine the correctness of the bed hole locations relative to the pre-punched holes in the Mounting Bracket (See figure below). Adjust the lay out or template pattern relative to the end of the bed, as necessary, to move the bed holes nearer the center of the mounting bracket holes.

Installers can keep a record of the adjustments that are found necessary to properly locate the bed holes. PullRite has performed numerous installations to develop these lay out dimensions, but encourages installers to satisfy themselves as to their accuracy. PullRite recommends using 3/4" holes through the bed to help accommodate tolerance variances that occur in the vehicle assembly. Experienced installers using PullRite custom brackets have been able to skip this step after several installations of a given model of truck.



1. Check all hole locations for any fuel lines or tanks and wiring that could become damaged in the drill process.
2. Once the bed hole pattern location is satisfactory, center punch all hole locations. If the template method is used, drill all eight indicated hole locations with an 1/16" drill bit using the template as a drill guide.
3. Drill all hole locations using a 3/4" drill bit. A step drill works best for drilling sheet metal.
4. Remove drill shavings from the bed and treat the raw edges of drill holes with a rust inhibitor.

Hitch Assembly

Hitch Assembly for 20,500#:

If the hitch type to be installed is a 20,500# (Part #0800), there is no assembly required except to attach the Base Rails to the base feet of the hitch Base using the four 1/2" Base Rail Pins and four #3 Pin Clips (See exploded drawing on page 2).

This hitch has four height settings and should be adjusted according to the directions found in the Operators Instructions found in the same box as the hitch. Be sure to torque all four 1/2" x 1 1/2" Bolts to 75 foot pounds.

Hitch Assembly for 16,000#:

If the hitch type to be installed is a 16,000# (Part #1200), it will be necessary to assemble the hitch first. Refer to page 3 and the exploded view of this hitch and the parts list below the drawing and follow these steps:

1. Attach the Base Sides to the Base Rail Assembly using the four 1/2" Base Rail Pins and four #3 Pin Clips.
2. Remove the 3/4" x 7" Pivot Bolt from the Rocker Arm and Crossmember.
3. The Rocker Arm is shipped upside down in the Crossmember for better packaging and will need to be removed and reinstalled right side up in the Crossmember as shown in the exploded view drawing on page 3. Tighten the 3/4" x 7" Pivot Bolt only enough to flatten the 3/4" Lock Washer or enough so that the Rocker Arm will rotate stiffly. Lubricate the 3/4" Pivot Bolt with heavy grease before installing.
4. Fasten the Crossmember and Base Sides together using six each of the 1/2"-13 x 1 1/2" Bolts, 1/2" Lock Washers and 1/2"-13 Hex Nuts, tighten bolts to 75 foot pounds. This hitch has four height settings and should be adjusted according to the directions found in the Operators Instructions found in the same box as the hitch.
5. Fasten the Fifth Wheel Plate in the Rocker Arm using two each of the 1/2" Clevis Pins and #3 Pin Clips after installing the Release Handle and Main Spring as shown below. Be sure to install the Main Spring so that the end with the swivel hook is inserted **into** the open end of the Release Handle as shown below.

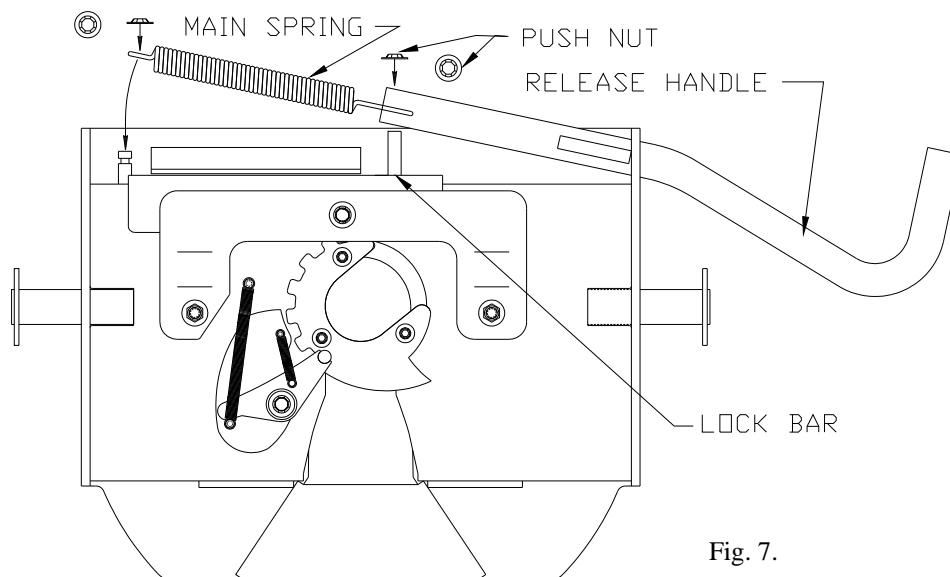
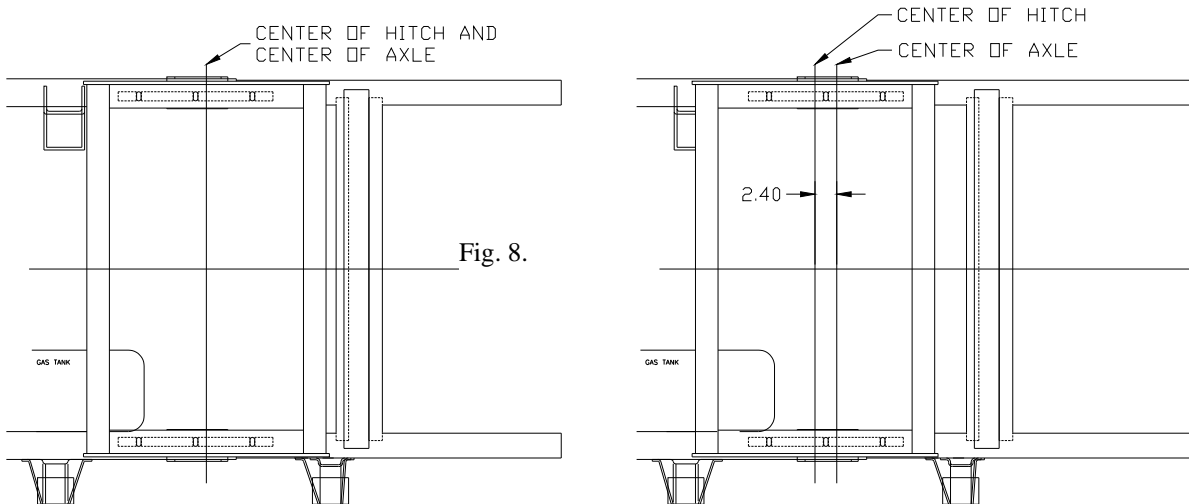


Fig. 7.

Hitch Installation

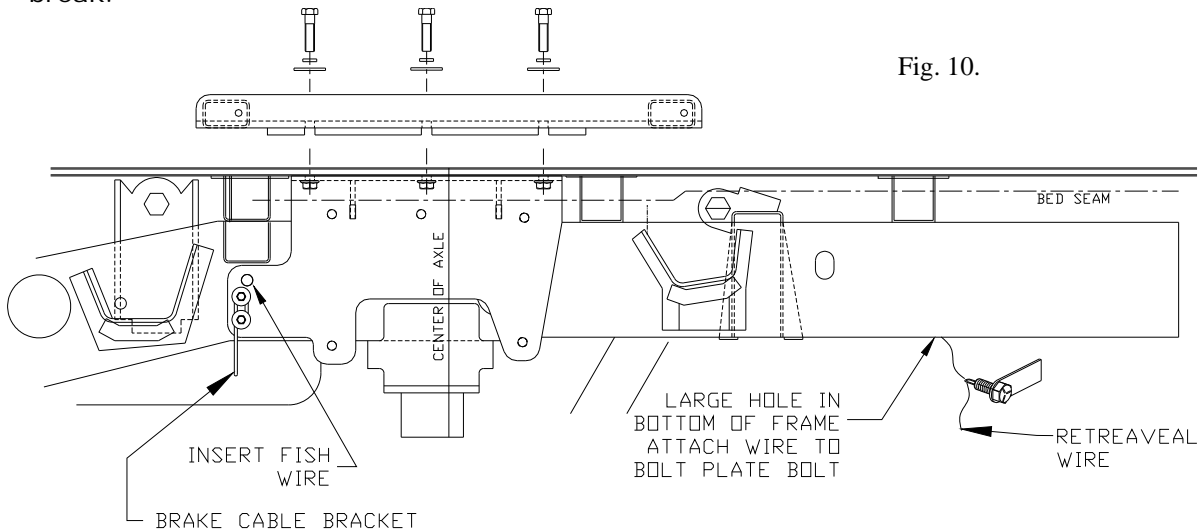
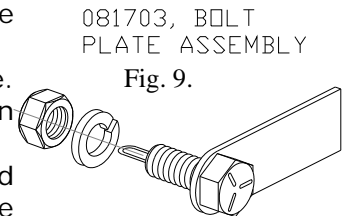
(Read instructions once completely before beginning actual installation)

1. Set the Base Rail Assembly in the bed so that the obround holes in the Base Rail Assembly line up with the holes the bed. Orientation in the bed of the Base Rail Assembly will result in the hitch being centered over the axle when the pattern of obround holes are located closest to the forward base rail tube and 2.4" ahead of the



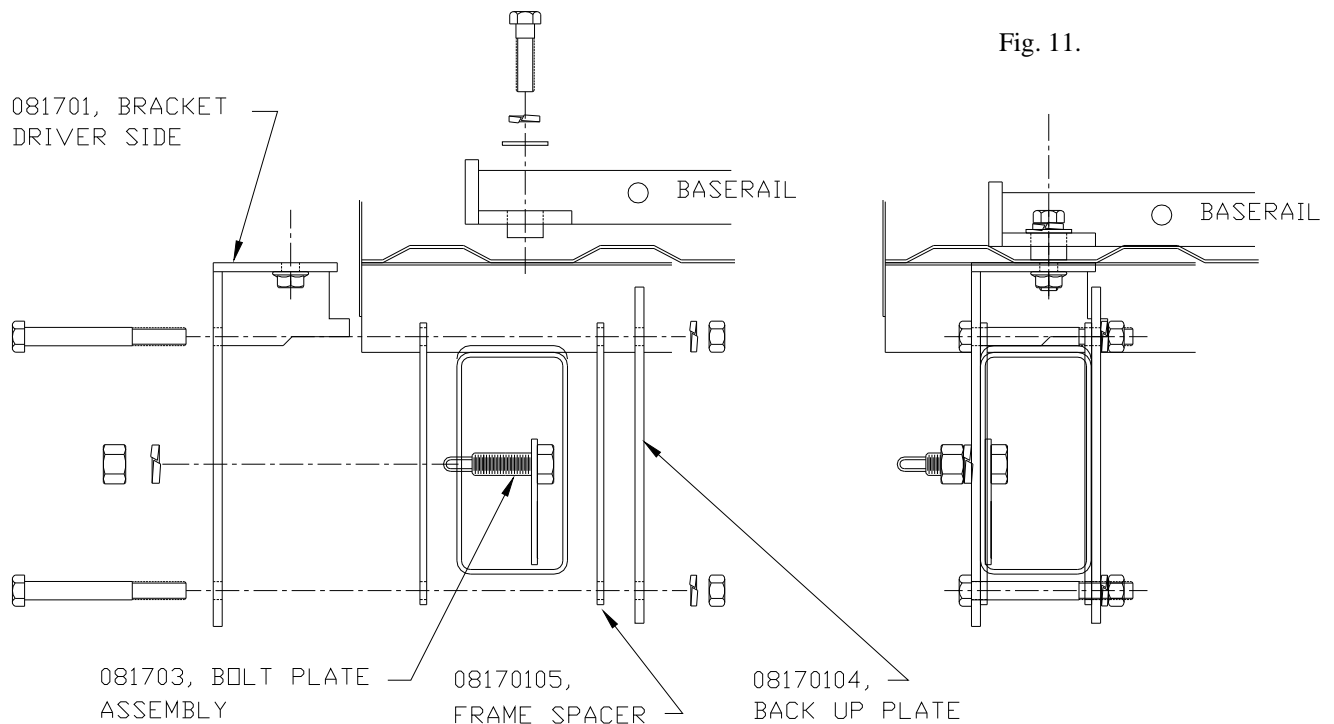
axle when the obround hole pattern is closest to the rear base rail tube. See figure 8 above.

2. Find the Bolt Plate with welded 5/8" bolt P/N: 081703 in the hardware kit. Make sure that the 5/8" Hex Nut will thread on to the bolt and that the bolt will fit into the existing frame hole see figure 6 page 6.
3. Find the existing frame holes as shown in figure 10 this page. The 5/8" bracket hole and the large round holes located on the bottom of the frame towards the rear of the truck.
4. Insert a "fish" wire into the front 5/8" existing frame hole and thread it towards the large hole located on the bottom of the frame at the rear, see the figure below. Use a short piece of wire, fashioned like a fish hook, to insert into the large hole to snare the "fish" wire down through the large hole.
5. Attach the "fish" wire to the eyelet welded to the bolt portion of the Bolt Plate P/N: 081703, also attach another wire to be used as a retrieval wire if the "fish" wire should break.



Hitch Installation continued

5. When running the "fish" wire through the passenger side frame be careful to avoid running the wire over the top of the muffler brackets. The muffler brackets are rods that run through the frame rail and welded in place. If the "fish" wire is run over the top of these rods the Bolt Plate will not pass over them.
6. Gently pull the Bolt Plate through the large rear hole and out through the front existing frame hole.
7. Position the Mounting Bracket on the frame so that the 5/8" bolt of the Bolt Plate, installed in the previous step, passes through the pre drilled holes in the Mounting Bracket. Secure the Mounting Bracket in place by threading the 5/8"-11 Hex Nut and 5/8" Lock Washer on to the 5/8" bolt of the Bolt Plate. Finger tighten only.
8. Referring to the figures on page 8 and the exploded view on page 4, insert the six 1/2" - 13 x 2" Bolts, with 1/2" Lock Washer and Flat Washer, through the Base Rail and thread them into the weld nuts of the Mounting Brackets. Leave these bolts loose.
9. Referring to figures 11 through 13, install the Frame Shims and Back Up Plates to the Mounting Brackets using five of each of the 1/2"-13 x 4 1/2" bolts, 1/2" Lock Washers, 1/2"-13 Hex Nuts, for each side of the frame.
10. Tighten all 1/2" fasteners to 75 foot pounds and all 5/8" fasteners to 150 foot pounds.
11. Install the hitch on the Base Rails, see the exploded view drawings on pages 2 and 3.
12. Adjust the height of the hitch according to the methods laid out in the Owners Instructions contained in box that contained the hitch.



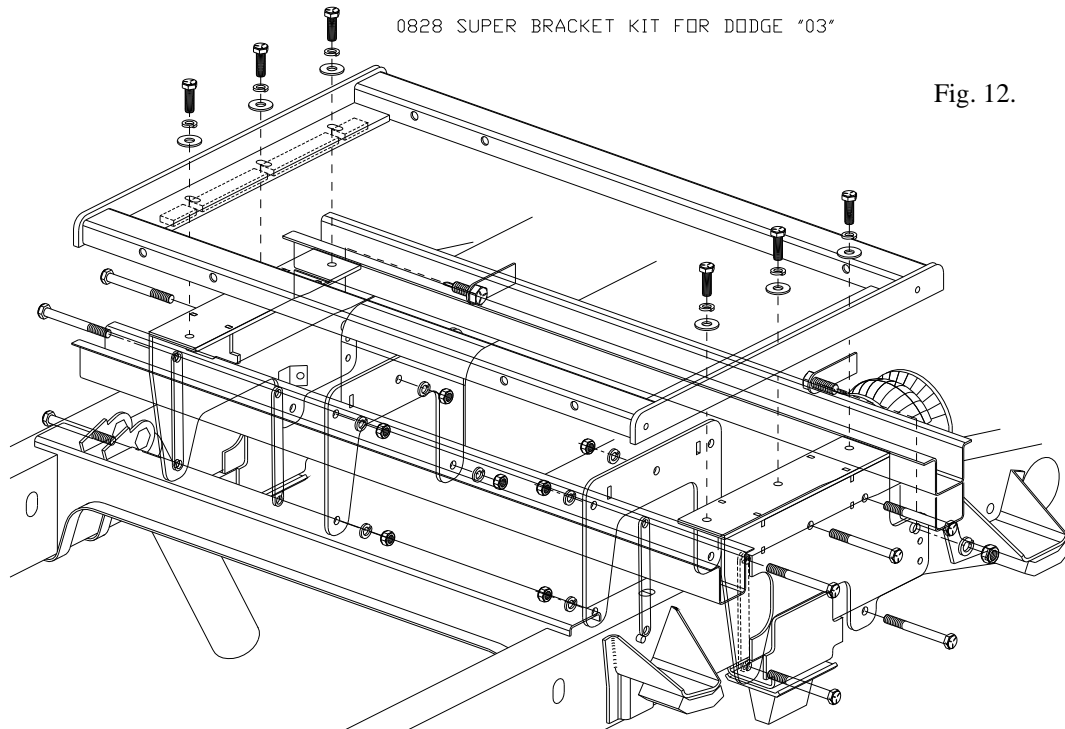


Fig. 12.

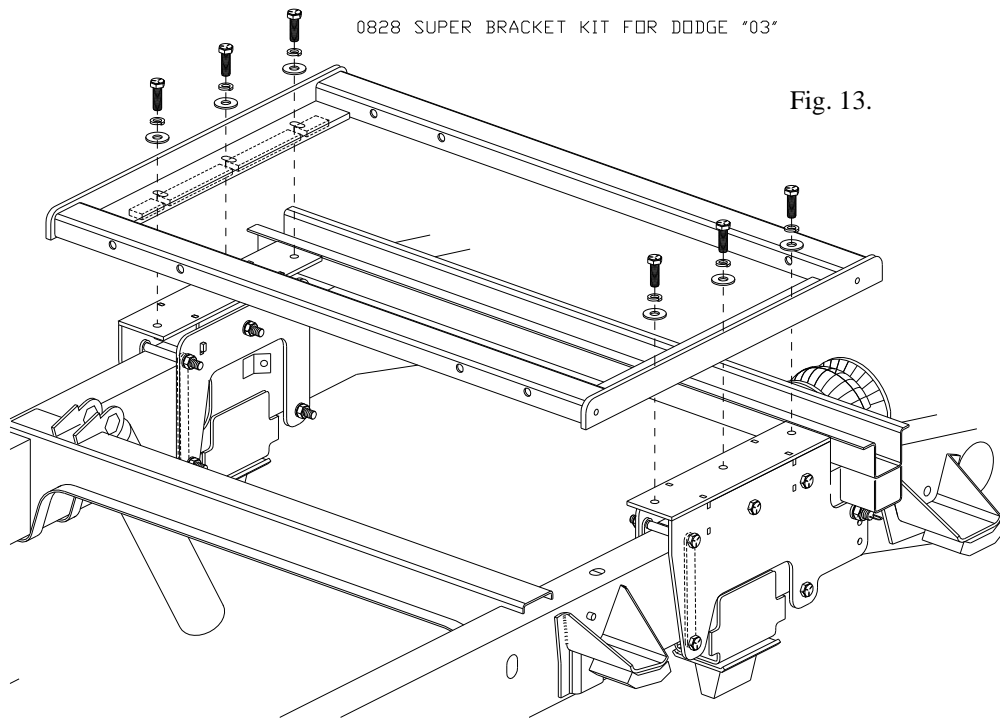


Fig. 13.

General Comments

First installations of any product usually take longer than if they were practiced. Keeping a record of measurement adjustments for each vehicle, make, and model will speed future installations and aid others who are training to install hitches. For installers who are interested in a hole pattern template, contact your PullRite distributor sales representative. If you have any installation questions, contact PullRite customer service at 800/443-2307.