



Super 5th Towing Solutions

INSTALLATION INSTRUCTIONS

SPECIFICATIONS:

16,000 Super 5th, (Part #1200)	
Gross Trailer Weight (Maximum).....	16,000 lbs.
Vertical Load Weight (Max. Pin Weight).....	4,000 lbs.
20,500 Super 5th, (Part #0800)	
Gross Trailer Weight (Maximum).....	20,500 lbs.
Vertical Load Weight (Max. Pin Weight).....	5,125 lbs.

FOR USE WITH
2003-2008 DODGE, 2500 2 & 4 WHEEL DRIVE, 6' & 8' BED TRUCKS
3500 4 WHEEL DRIVE ONLY, 6' & 8' BED TRUCKS
HITCH IS LOCATED 1- 5/16" AHEAD OF AXLE
CUSTOM MOUNTING BRACKETS (Part # 0816)
CUSTOM MOUNTING KIT (PART # 0827)

Introduction

The following steps provide several pages of general instruction for the installation of the **16,000# (part number 1200)** and **20,500# (part number 0800) SUPER 5TH** towing system. Should you have any questions, please call the factory at (800) 443-2307 for installation assistance.

Index

Page

Introduction	1
Parts List For 16,000# & 20,500# Hitch	2
Parts List For Custom Mounting Bracket & Tools Needed for Installation	3
Super 5th Preparation, Vehicle Preparation & Laying Out and Marking the Bed	4
Installation Tip & Drilling the Bed	5
Hitch Assembly	6
Hitch Installation	7 – 10

**WOULD YOU LIKE A HITCH THAT LEAVES THE BED CLEAN
WHEN REMOVED?**

ASK YOUR SUPER 5TH DISTRIBUTOR ABOUT "SUPER RAIL" MOUNTING KITS

20,500 PARTS LIST

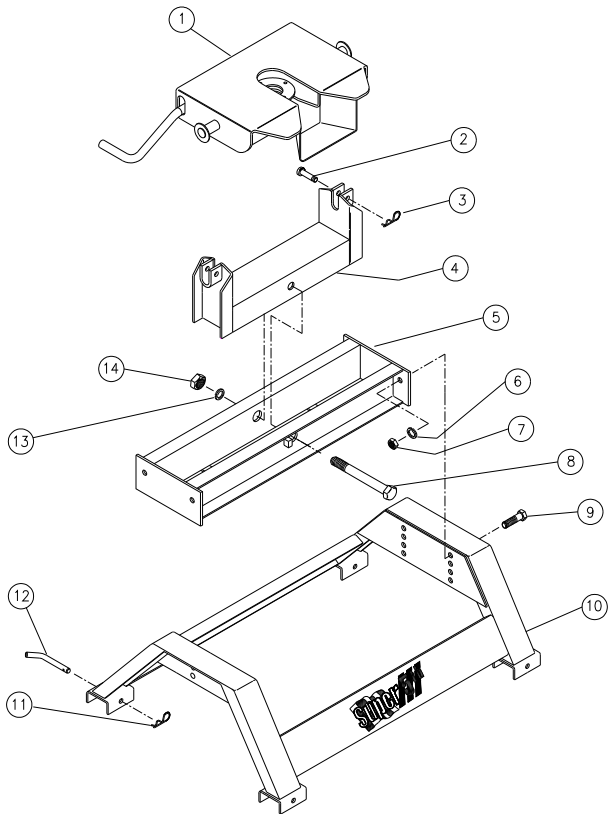


Figure 1

Ref.	Part #	Part Name
1	3601	Plate
2	98410111	Clevis Pin
3	98410127	Clevis Pin Clip
4	0802	Rocker Arm
5	0803	Crossmember
6	98200142	1/2" Lock Washer
7	98150153	1/2"-13 Hex Nut
8	98010147	Rocker Arm Pivot Bolt
9	98010167	1/2"-13 x 1 1/2" HHCS
10	0804	Base
11	98410127	Clevis Pin Clip
12	08060001	Base Rail Hinge Pin
13	98200124	3/4" Split Lock Washer
14	98150131	3/4"-10 Hex Nut

Table 1

16,000 PARTS LIST

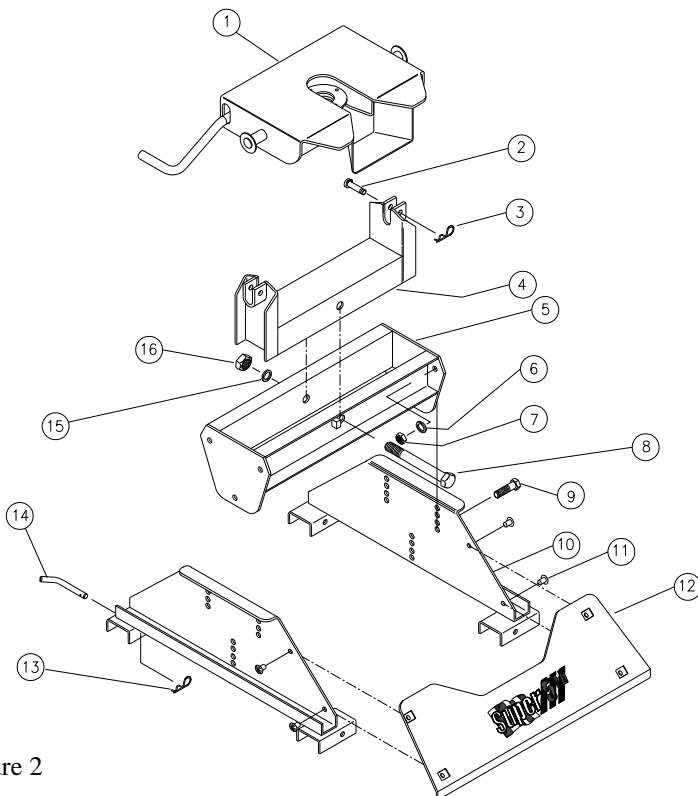


Figure 2

Ref.	Part #	Part Name
1	3601	Plate
2	98410111	Clevis Pin
3	98410127	Clevis Pin Clip
4	0802	Rocker Arm
5	1202	Crossmember
6	98200142	1/2" Lock Washer
7	98150153	1/2"-13 Hex Nut
8	98010147	Rocker Arm Pivot Bolt
9	98010167	1/2"-13 x 1 1/2" HHCS
10	1203	Base Sides (set)
11	98410560	Plastic Barbed Fastener
12	120302	Cover Assembly
13	98410127	Clevis Pin Clip
14	08060001	Base Rail Hinge Pin
15	98200124	3/4" Split Lock Washer
16	98150131	3/4"-10 Hex Nut

Table 2

Parts List For Dodge Super 5th Custom Mounting Brackets

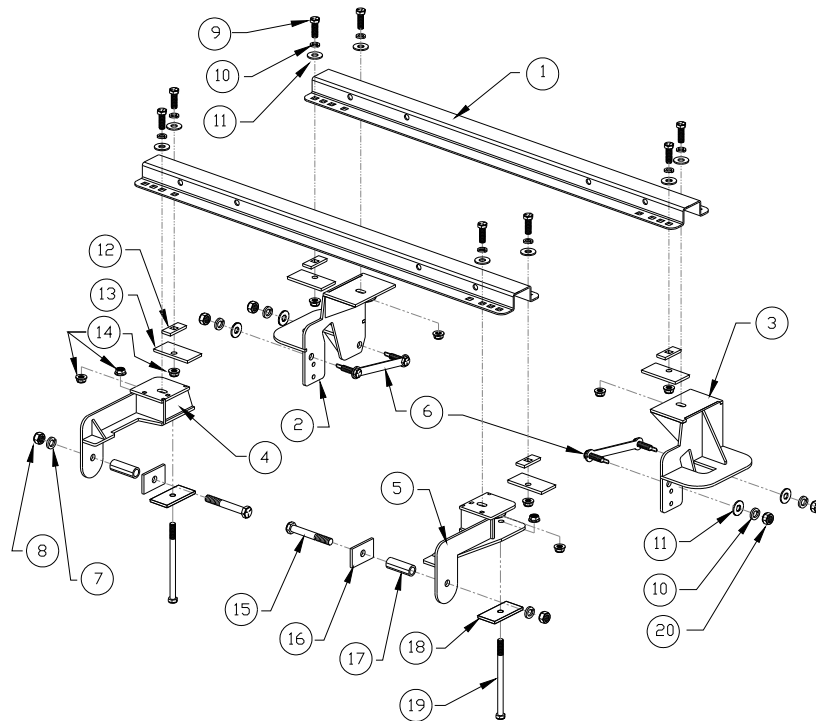


Fig. 3.

Ref.	Item	Part #	Qty
1.	Base Rails	08050001	2
2.	Front Mounting Bracket, Driver Side	081601	1
3.	Front Mounting Bracket, Passenger Side	081602	1
4.	Rear Mounting Bracket, Driver Side	081603	1
5.	Rear Mounting Bracket, Passenger Side	081604	1
6.	Bolt Plate with 1/2" Bolts & Loops	081605	2
7.	5/8" Lock Washer	98200133	2
8.	5/8"-11 Hex Nut	98150175	2
9.	1/2"-13 x 2" HHCS Grd. 5	98010175	8
10.	1/2" Split Lock Washer	98200142	12
11.	1/2" Flat Washer	98250145	12
12.	5/16" x 1" x 2 1/4", Sq. Hole, Bed Shim	08070201	4
13.	Back Up Plate, Offset Hole	05070303	4
14.	1/2"-13 Flange Nut	98150201	10
15.	5/8"-11 x 4 1/2" HHCS Grd. 5	98010234	2
16.	Rear Mounting Bracket, 5/8" Back Up Plate	08160307	2
17.	Rear Mounting Bracket, Frame Spacer	33180701	2
18.	Back Up Plate, Center Hole	05070302	2
19.	1/2"-13 x 7 1/2" HHCS Grd. 5	98010214	2
20.	1/2"-13 Hex Nut	98150153	4
	Hardware Kit (Fasteners & Spacers)	081606	
	Custom Mounting Bracket Set (Brkts. & Hwd.)	0816	
	Installation Kit (Brackets, Rails & Hardware)	0827	

Tools Needed For Installation

1/2" Drill Motor	15/16" & 3/4" Socket	1/2" Drive Impact Gun or 1/2"
1/8" & 1/16" Drill Bit	1 1/8" Socket	Drive Ratchet Wrench 3/4"
1/2" Drill Bit	Torque Wrench	Combination Wrench
3/4" Step Drill Bit	Measuring Tape	Felt Tipped Marker
		Hammer

VEHICLE PREPARATION

After blocking the front wheels, place jack stands under the frame so that the rear of the truck is high enough to allow the rear wheels to drop. This will give easy access to the frame area in the rear wheel well. Remove the emergency brake cable bracket located in the driver side wheel well, refer to figure 7 on page 5. Replace this bracket after installing the hitch mounting brackets. If the truck is a **two wheel drive**, remove the axle jounce bumper located just above the axle on the bottom of the frame, replace after the hitch is installed. If the truck is a **two wheel drive one ton**, this is the wrong mounting system, you need P/N: 0828.

Refer to figure 10 page 7 if the installation is for a six foot bed truck. Trim the cross sill extensions located under the front bed cross sill even with the bottom of the main cross sill as they will interfere with the installation of the Front Mounting Bracket.

Remove the spare tire for easier access to install the Rear Mounting Bracket.

Laying Out and Marking the Bed

Template method to mark bed:

1. Place the rear edge of the template 26-9/16" for 6' bed and 28-15/32" for 8' bed forward of the rear edge of the truck bed. See figure 6 below.
2. Center template in bed from left and right. Lineup the etched centerline with the centerline of the truck bed.
3. While standing on the template, use an 1/16" drill bit to mark the bed at each hole location shown in figure 4.

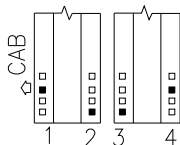


Fig. 4.

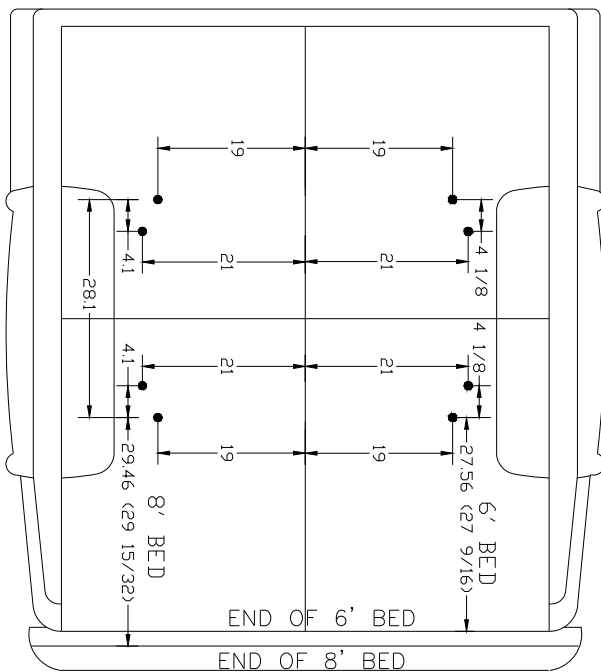
Ask your distributor sales representative about hole pattern templates (P/N: 0899).

Layout method to mark bed:

Using the dimensions shown below (see figure 5 below), draw layout lines in the bed using a straight edge and marker or chalk line. At intersections of marked lines, use a center punch to mark the bed.

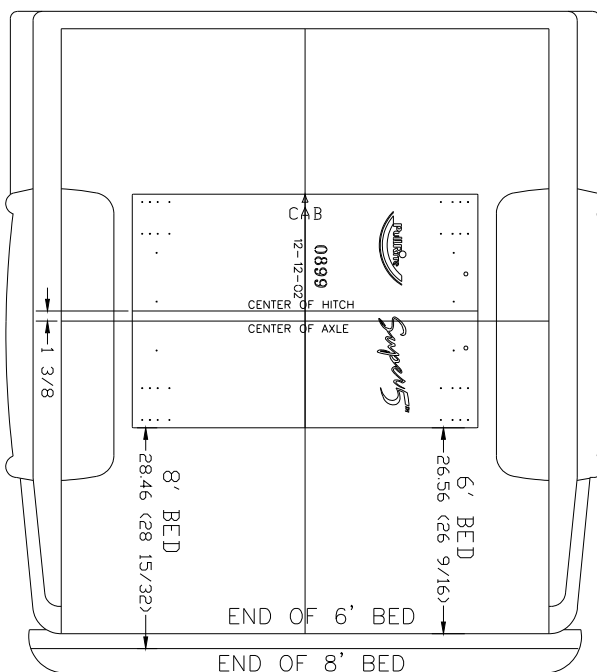
Layout Method

Fig. 5.



Template Method

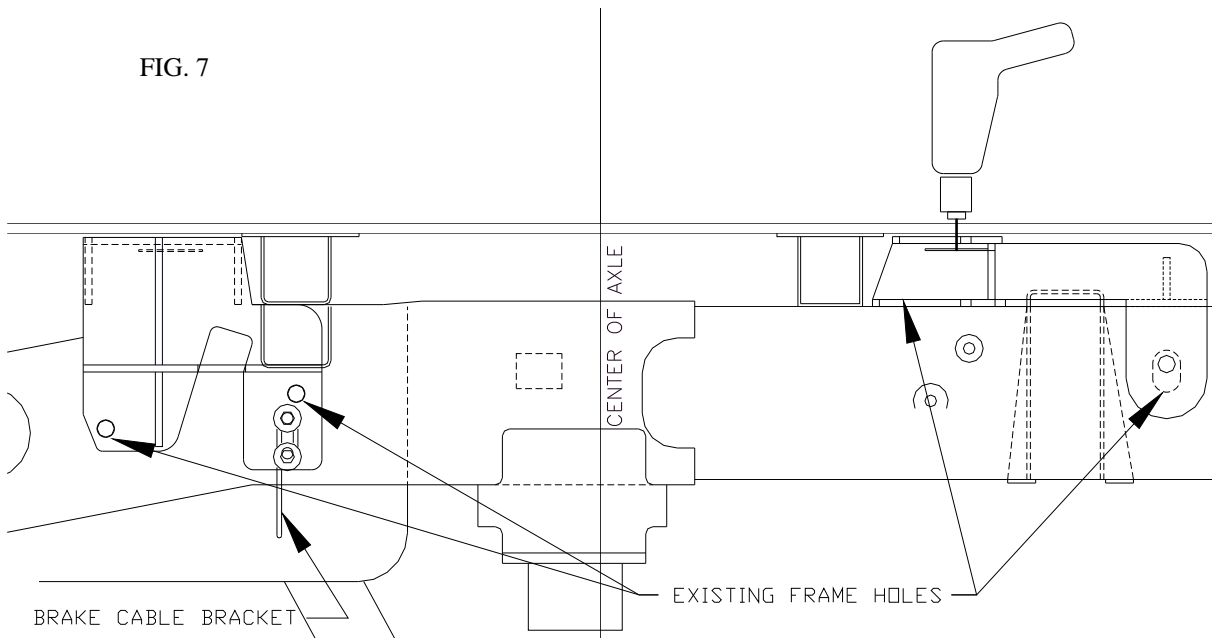
Fig. 6.



Installation Tips

To avoid drilling holes in error from out of tolerance bed to frame dimensions, mark the hole locations as lightly as possible if a center or transfer punched is used. Then use a very small diameter drill bit to drill one location on either side of bed. Place the Mounting Brackets against the frame to determine the correctness of the bed hole locations relative to the pre-punched holes in the Mounting Bracket and existing frame holes (See figure below). Adjust the lay out or template pattern relative to the end of the bed, as necessary, to move the bed holes nearer the center of the mounting bracket holes.

Installers can keep a record of the adjustments that are found necessary to properly locate the bed holes. PullRite has performed numerous installations to develop these lay out dimensions, but encourages installers to satisfy themselves as to their accuracy. PullRite recommends using 3/4" holes through the bed to help accommodate tolerance variances that occur in the vehicle assembly. Experienced installers using PullRite custom brackets have been able to skip this step after several installations of a given model of truck.



Drilling the Bed

1. Check all hole locations for any fuel lines or tanks and wiring that could become damaged in the drill process.
2. Once the bed hole pattern location is satisfactory, center punch all hole locations. If the template method is used, drill all eight indicated hole locations with an 1/16" drill bit using the template as a drill guide.
3. Remove the template and drill all hole locations using a 3/4" drill bit. A step drill works best for drilling sheet metal.
4. Remove drill shavings from the bed and treat the raw edges of drill holes with a rust inhibitor.

Hitch Assembly

Hitch Assembly for 20,500#:

If the hitch type to be installed is a 20,500# (Part #0800), there is no assembly required except to attach the Base Rails to the base feet of the hitch Base using the four 1/2" Base Rail Pins and four #3 Pin Clips (See exploded drawing on page 2).

This hitch has four height settings and should be adjusted according to the directions found in the Operators Instructions found in the same box as the hitch. Be sure to torque all four 1/2" x 1 1/2" Bolts to 75 foot pounds.

Hitch Assembly for 16,000#:

If the hitch type to be installed is a 16,000# (Part #1200), it will be necessary to assemble the hitch first. Refer to page 2, the exploded view of this hitch and the parts list below the drawing then follow these steps:

1. Attach the Base Sides to the Base Rail Assembly using the four 1/2" Base Rail Pins and four #3 Pin Clips.
2. Remove the 3/4" x 7" Pivot Bolt from the Rocker Arm and Crossmember.
3. The Rocker Arm is shipped upside down in the Crossmember for better packaging and will need to be removed and reinstalled right side up in the Crossmember as shown in the exploded view drawing on page 2. Tighten the 3/4" x 7" Pivot Bolt only enough to flatten the 3/4" Lock Washer or enough so that the Rocker Arm will rotate stiffly. Lubricate the 3/4" Pivot Bolt with heavy grease before installing.
4. Fasten the Crossmember and Base Sides together using six each of the 1/2"-13 x 1 1/2" Bolts, 1/2" Lock Washers and 1/2"-13 Hex Nuts, tighten bolts to 75 foot pounds. This hitch has four height settings and should be adjusted according to the directions found in the Operators Instructions found in the same box as the hitch.
5. Fasten the Fifth Wheel Plate in the Rocker Arm using two each of the 1/2" Clevis Pins and #3 Pin Clips after installing the Release Handle and Main Spring as shown below. Be sure to install the Main Spring so that the end with the swivel hook is inserted **into** the open end of the Release Handle as shown below.

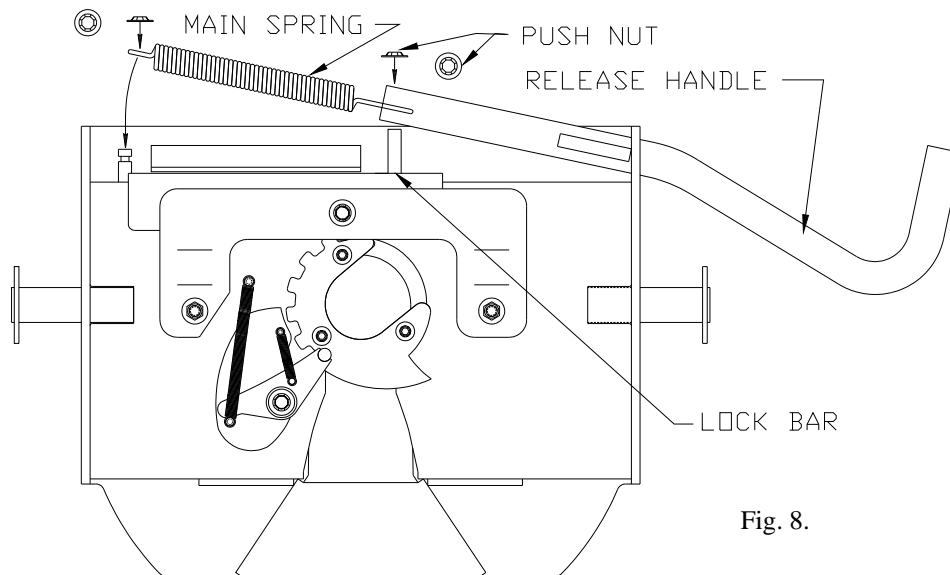


Fig. 8.

Hitch Installation (Front Brackets)

(Read instructions once completely before beginning actual installation)

1. Set the **entire** hitch assembly in the bed so that the square holes in the Base Rails line up with the holes drilled in the bed.
2. Find the Bolt Plate with welded 1/2" bolts P/N: 081605 in the hardware kit. Make sure that the 1/2" Hex Nuts will thread on to the bolts and that the bolts will fit into the existing frame holes, see figure 9 & 10 this page.
3. Find the existing frame holes as shown in figure 10 this page. The 5/8" bracket hole and the large round holes located on the bottom of the frame towards the rear of the truck.
4. Insert a "fish" wire into the front 5/8" existing frame hole and thread it towards the large hole located on the bottom of the frame at the rear, see the figure below. Use a short piece of wire, fashioned like a fish hook, to insert into the large hole to snare the "fish" wire down through the large hole.
5. Attach the "fish" wire to the eyelet welded to the bolt portion of the Bolt Plate P/N: 081605, also attach another wire to the small hole located in one end of the Bolt Plate to be used as a retrieval wire if the "fish" wire should break. Be sure the first wire is attached to the bolt welded to the opposite end of the retrieval wire hole.
6. Repeat steps 4 and 5 for the rear 5/8" existing frame hole and second bolt of the Bolt
7. When running the "fish" wire through the passenger side frame be careful to avoid running the wire over the top of the muffler brackets. The muffler brackets are rods that run through the frame rail and welded in place. If the "fish" wire is run over the top of these rods the Bolt Plate will not pass over them. Remove axle jounce bumpers for two wheel drive trucks only.
8. Gently pull the Bolt Plate through the large rear hole and out through the front existing frame holes. Make sure the bolt nearest the retrieval wire goes through last.
9. Examine the Front Mounting Brackets and note that there is a 1/16" thick tab located just below the obround hole in the top plate of the Mounting Bracket. The purpose of this tab is to hold in place and provide "back up" for the 1/2"-13 Flange Nuts. To install the Flange Nuts, pry the "tab" down far enough so that a Flange Nut can be inserted then push the "tab" back up into position. The Flange Nut should be able to slide in and out while the "tab" holds the nut in place. When fastening the Base Rails to the Mounting Brackets the Flange Nut can easily be positioned under the square hole in the Base Rail using a pen or other small tool. When tightening the 1/2"-13 x 2" Bolts and these Flange Nuts with an impact gun, start slowly as the "tab" may otherwise "strip out".
10. Position the Mounting Bracket on the frame so that the 1/2" bolt of the Bolt Plate passes through the pre drilled holes in the Mounting Bracket. Secure the Mounting Bracket in place by threading the 1/2"-13 Hex Nuts, 1/2" Lock Washers and 1/2" Flat Washers on to the 1/2" bolt of the Bolt Plate, see figure 12 page 8. Finger tighten only

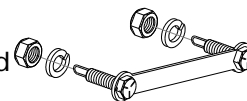


Fig. 9.

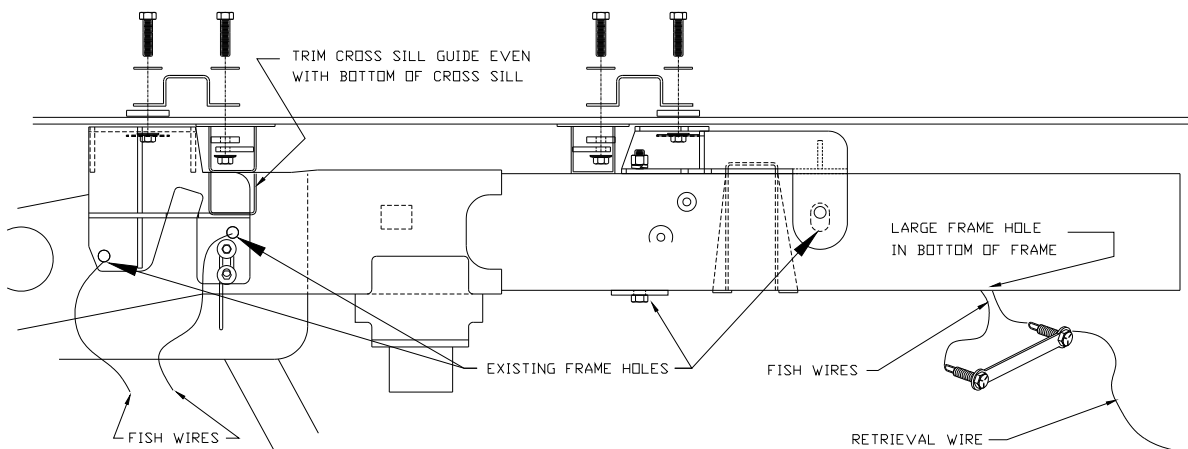


Fig. 10.

Hitch Installation (Front Brackets)

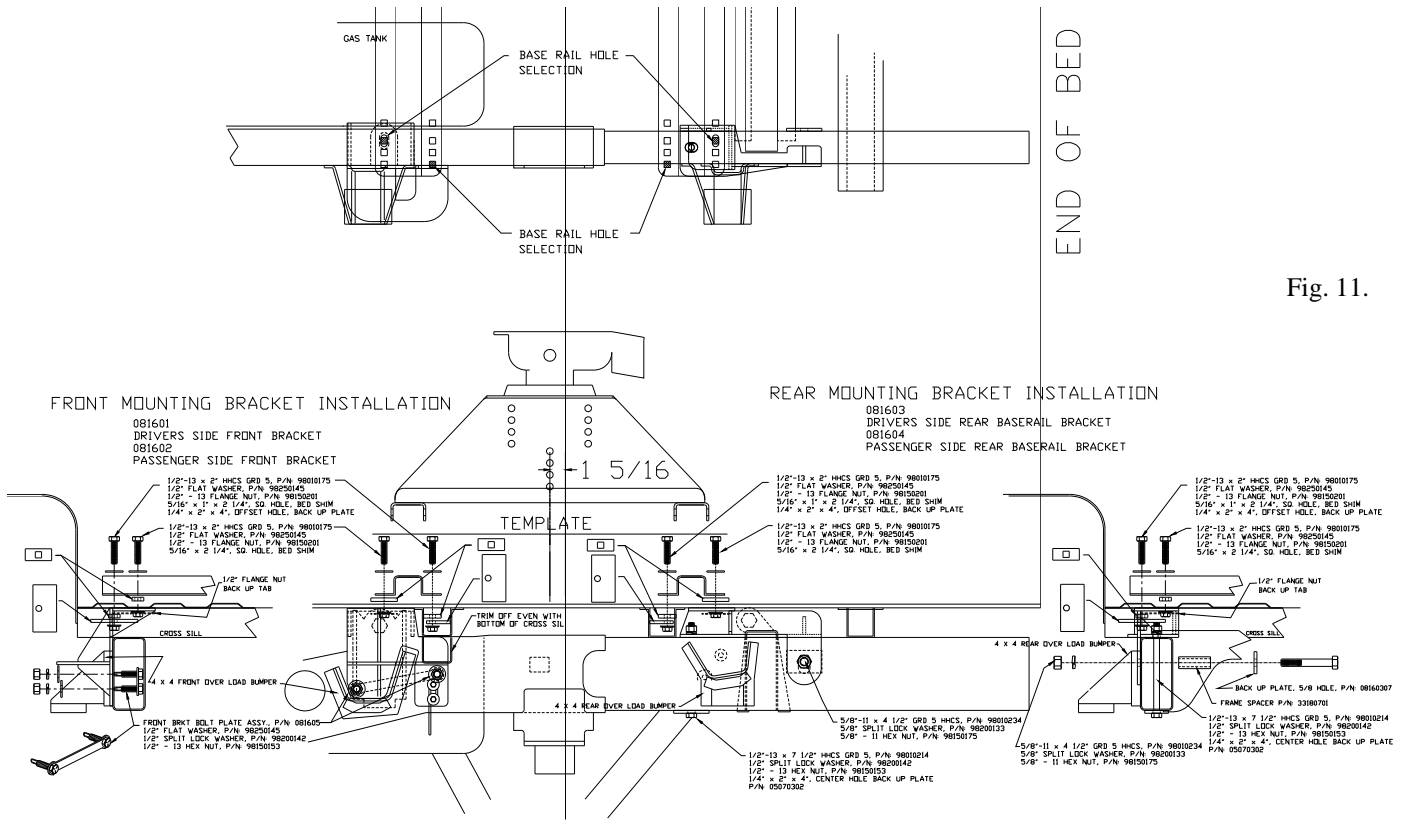


Fig. 11.

FRONT MOUNTING BRACKET INSTALLATION

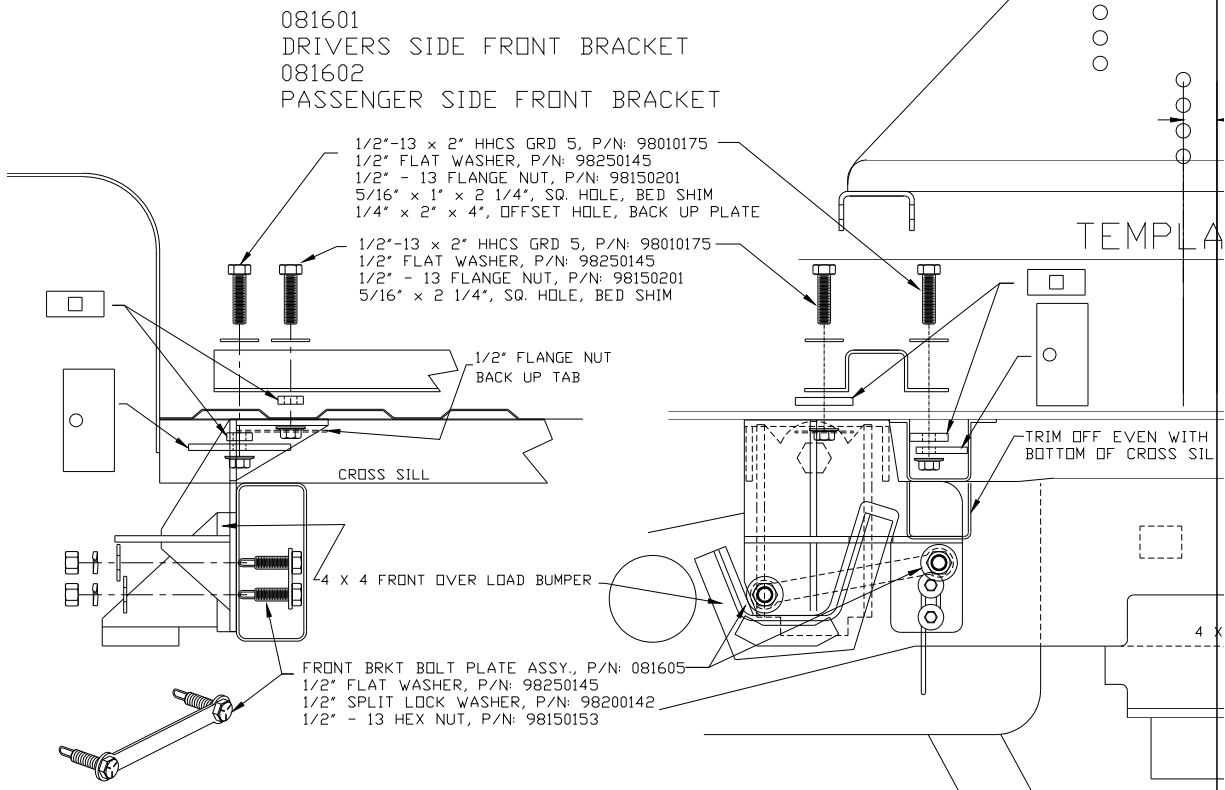
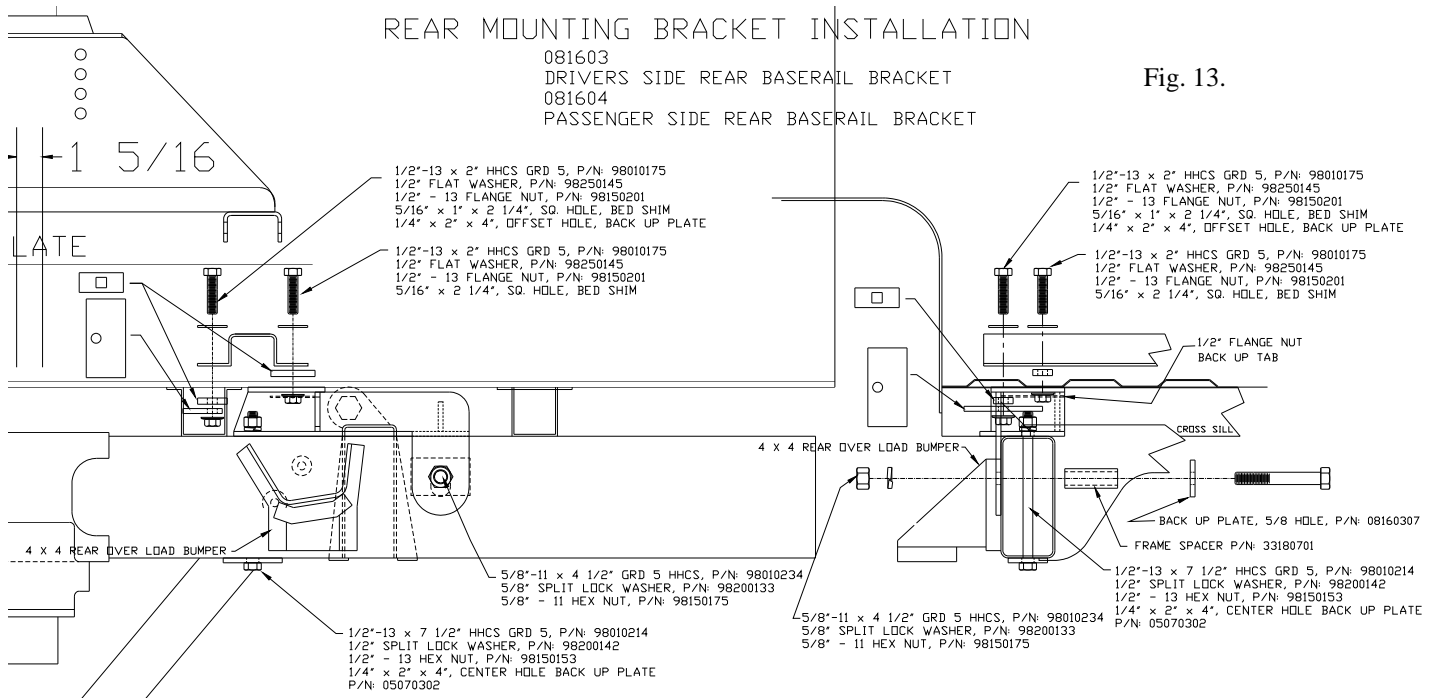


Fig. 12.

Hitch Installation (Rear Brackets)

11. Install a 1/2"-13 Flange Nut into the "tabs" welded to the Rear Mounting Brackets in the same manner as was done for the Front Mounting Brackets in step 9.
12. Referring to figures 13 and 14 on this page and page 10, install the Rear Mounting Brackets P/N: 081603 and 081604. When fastening the Rear Mounting Bracket rear hole location, make sure that the Frame Shim P/N: 33180701 is installed so that it does not extend past the side wall of the frame. This will insure that the 5/8"-11 x 4 1/2" Bolt will fasten the Rear Mounting Bracket tightly to the frame. If the Frame Shim **does** extend past the side wall of the frame, it is either made too long or it is not seated properly against the Mounting Bracket through the opposite obround hole. Finger tighten the 5/8"-11 Hex Nut and 5/8" Split Lock Washer.
13. To fasten the Rear Mounting Bracket front hole location, find the obround hole located in the bottom of the frame rail just below and slightly behind the cross sill located just ahead of the Rear Mounting Bracket position. Referring to figures 13 and 14, fasten the Rear Mounting Bracket at this location using the 1/2"-13 x 7 1/2" Bolt, Center Hole Back Up Plate P/N: 05070302 and 1/2"-13 Flange Nut. Finger tighten only.
14. Referring to the figures 11 through 14 and the exploded view on page 3, insert the four 1/2" - 13 x 2" Bolts, with 1/2" Lock Washer and Flat Washer, through the Base Rail and thread them into the Flange Nuts installed in step 9. Leave these bolts loose.
15. Referring to the figures 11 through 14 and the exploded view on page 3, insert the remaining four 1/2"-13 x 2" Bolts through the Base Rails. These bolts will come down through the bed in an area between the side walls of a cross sill. Fasten these bolts in place using a 5/16" square hole Bed Shim P/N: 08070201, an off set hole Back Up Plate and 1/2"-13 Flange Nut.
16. Tighten all 1/2" fasteners to 75 foot pounds and all 5/8" fasteners to 150 foot pounds.
17. Adjust the height of the hitch according to the methods laid out in the Owners Instructions found in box that contained the hitch.



Hitch Installation (Rear Brackets)

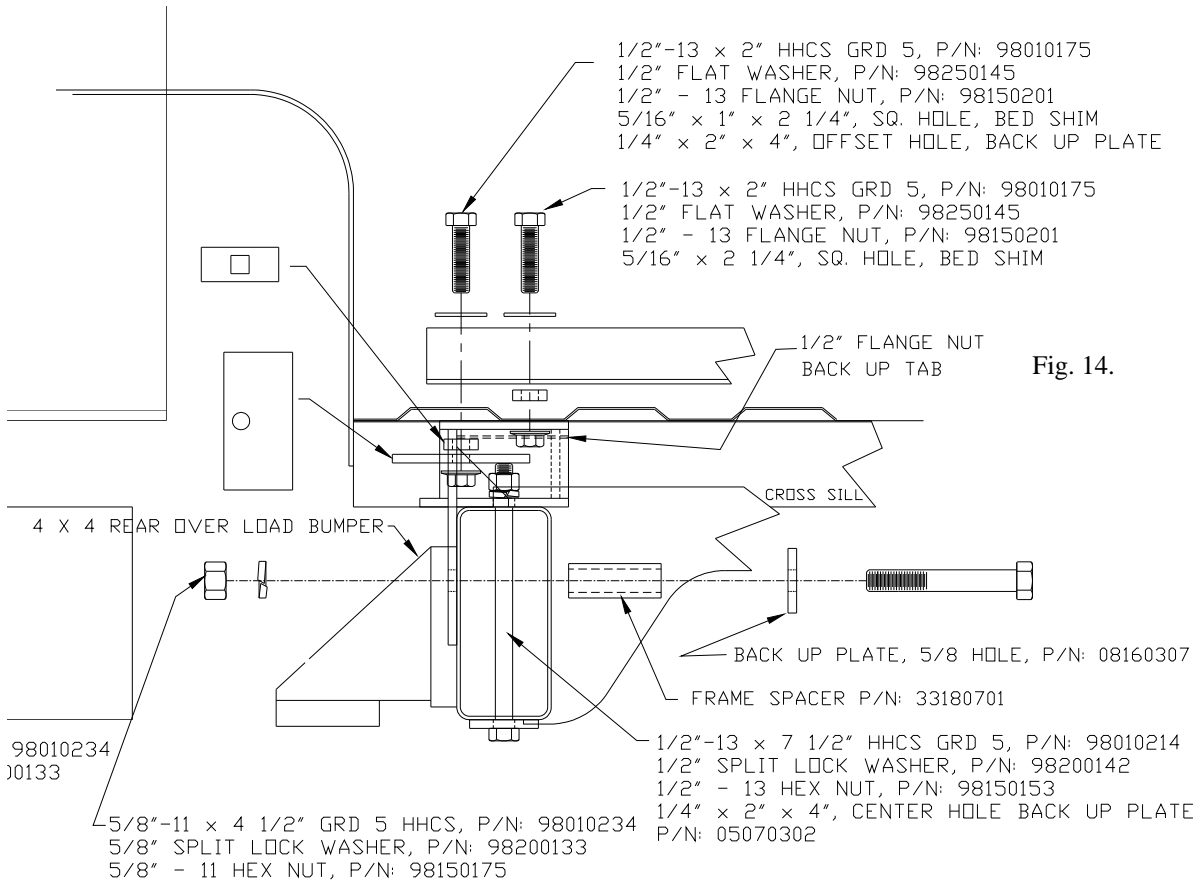


Fig. 14.

General Comments

First installations of any product usually take longer than if they were practiced. Keeping a record of measurement adjustments for each vehicle, make, and model will speed future installations and aid others who are training to install hitches. For installers who are interested in a hole pattern template, contact your PullRite distributor sales representative. If you have any installation questions, contact PullRite customer service at 800/443-2307.