



Super 5th Towing Solutions

INSTALLATION INSTRUCTIONS

SPECIFICATIONS:

25,500 Super 5th, (Part #0503 & 0515)
 Gross Trailer Weight (Maximum).....25,500 lbs.
 Vertical Load Weight (Max. Pin Weight).....6375 lbs.

FOR USE WITH
2003-2008 DODGE, 2500, 3500 TRUCKS
HITCH IS LOCATED CENTER OF THE AXLE
CUSTOM MOUNTING BRACKETS (Part # 0509)
CUSTOM MOUNTING KIT (PART # 0525)
NO FRAME DRILLING

Introduction

The following steps provide several pages of general instruction for the installation of the **25,500# (part number 0503)** and **25,500# Low Profile (part number 0515) SUPER 5TH** towing system. Should you have any questions, please call the factory at (800) 443-2307 for installation assistance.

General Comments

First installations of any product usually take longer than if they were practiced. Keeping a record of measurement adjustments for each vehicle, make, and model will speed future installations and aid others who are training to install hitches. For installers who are interested in a **Bed Hole Pattern Template**, contact your PullRite distributor sales representative.

<u>Index</u>	<u>Page</u>
Introduction _____	1
Parts List For 25,500# Hitch P/N: 0503 _____	2
Parts List For 25,500# Low Profile Hitch P/N: 0515 _____	3
Parts List For Custom Mounting Kit 0525 & Tools Needed for Installation _____	4
Vehicle Preparation & Laying Out and Marking the Bed _____	5
Installation Tip & Drilling the Bed _____	6
Mounting Kit Installation _____	7 & 8
Mounting Kit Illustrations _____	9 & 10

Parts List For 25,500 Super 5th Hitch
P/N: 0503

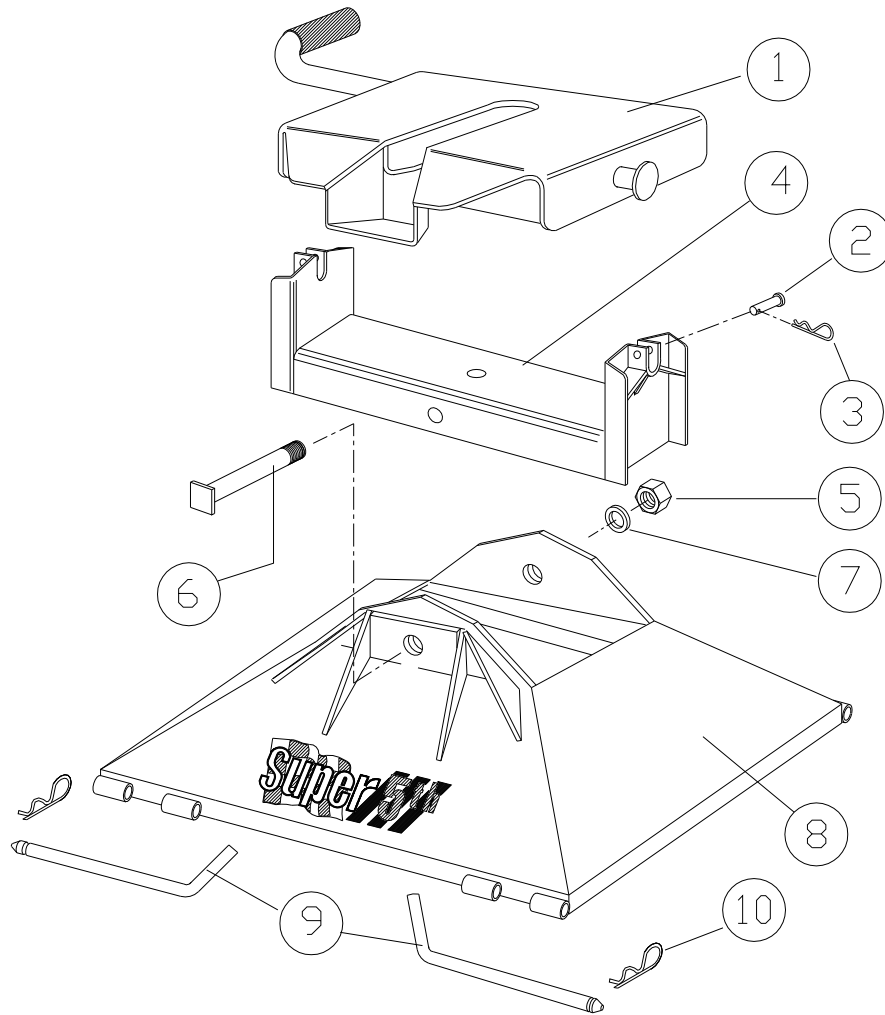


Fig. 1.

Ref.	Description	Part #	Qty.
1)	Plate	3601	1
2)	1/2" Clevis Pin	98410111	2
3)	#3 Pin Clip	98410127	2
4)	Rocker Arm	050403	1
5)	1" -8 Hex Nut	98150120	1
6)	1" -8 x 7-1/2" HHCS Pivot Bolt	140501	1
7)	1" Lock Washer	98200115	1
8)	Base Pedestal	050402	1
9)	3/4" Rd. Base Rail Hinge Pins	05010601	4
10)	#9 Pin Clip	98410143	4

Parts List For 25,500 Low Profile Super 5th Hitch
P/N: 0515

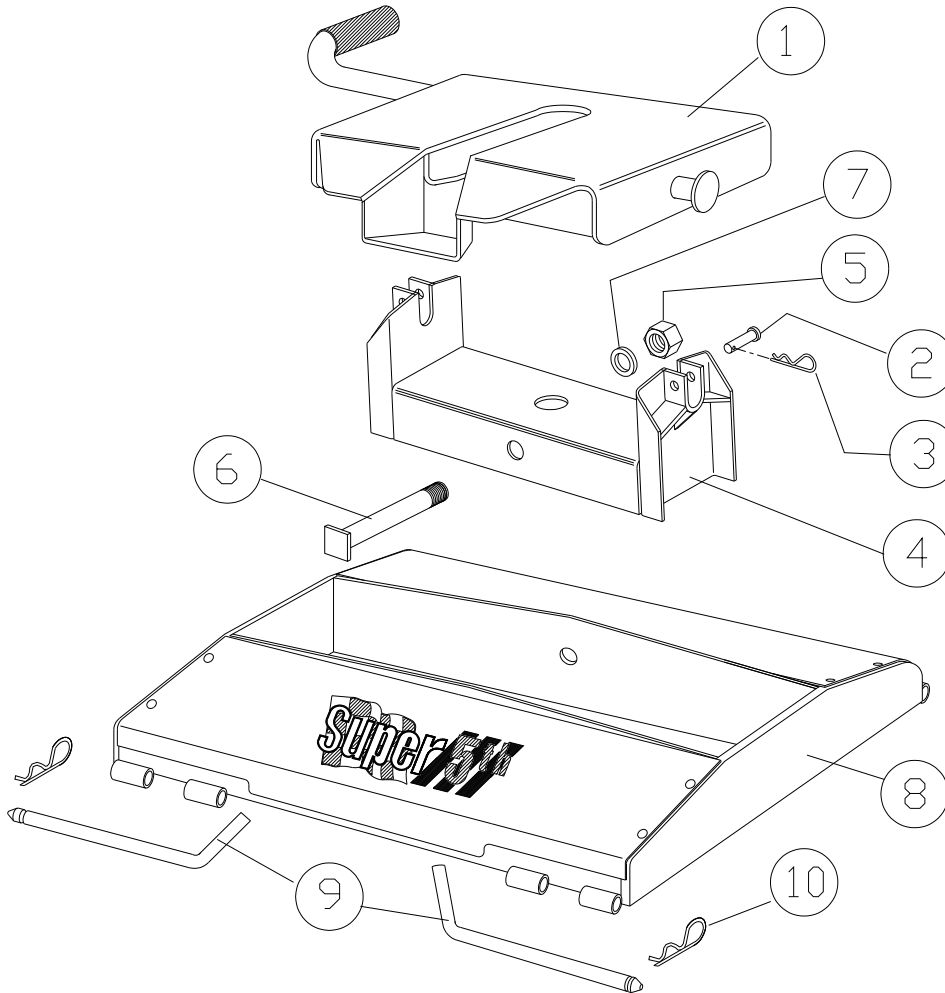
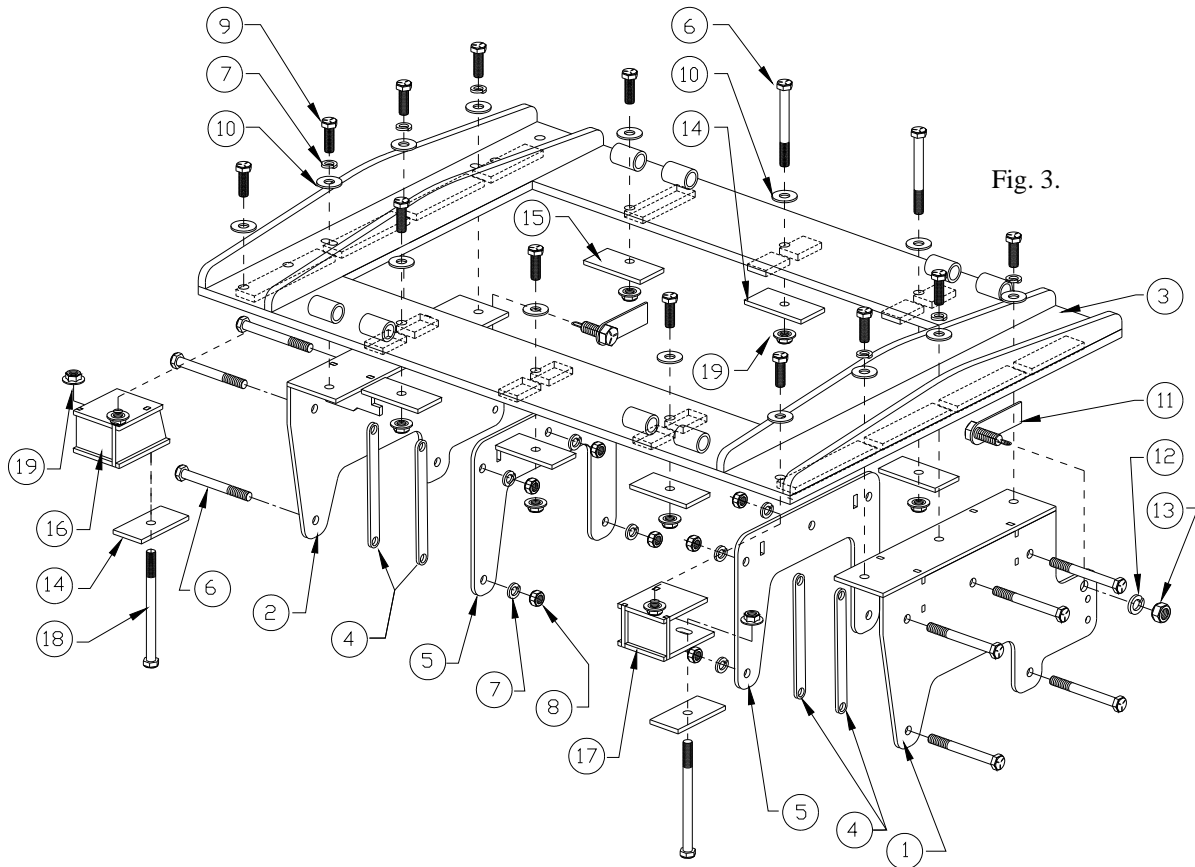


Fig. 2.

Ref.	Description	Part #	Qty.
1)	Plate	3601	1
2)	1/2" Clevis Pin	98410111	2
3)	#3 Pin Clip	98410127	2
4)	Rocker Arm	050403	1
5)	1" -8 Hex Nut	98150120	1
6)	1" -8 x 7-1/2" HHCS Pivot Bolt	140501	1
7)	1" Lock Washer	98200115	1
8)	Base Pedestal	050402	1
9)	3/4" Rd. Base Rail Hinge Pins	05010601	4
10)	#9 Pin Clip	98410143	4

Parts List For Dodge Super 5th Custom Mounting Kit P/N: 0525



Ref.	Item	Part #	Qty
1.	Passenger Side Mounting Bracket	081702	1
2.	Driver Side Mounting Bracket	081701	1
3.	Base Rail Assembly	05070301	1
4.	Frame Spacer	08170105	4
5.	Mounting Bracket Back Up Plate	08170104	2
6.	1/2"-13 x 4 1/2" HHCS Grd. 5	98010195	12
7.	1/2" Split Lock Washer	98050128	16
8.	1/2"-13 Hex Nut	98150153	10
9.	1/2"-13 x 2" HHCS Grd. 5	98010175	12
10.	1/2" Flat Washer	98250145	14
11.	Bolt Plate with 5/8"-11 x 1 1/2" Hex Bolt	081703	2
12.	5/8" Lock Washer	98200133	2
13.	5/8"-11 Hex Nut	98150175	2
14.	Back Up Plate, Center Hole	05070302	7
15.	Back Up Plate, Offset Hole	05070303	1
16.	Rear Bracket, Driver Side	050901	1
17.	Rear Bracket, Passenger Side	050902	1

Tools Needed For Installation

1/2" Drill Motor
 1/8" & 1/16" Drill Bit
 1/2" Drill Bit
 3/4" Step Drill Bit

15/16" & 3/4" Socket
 1 1/8" Socket
 Torque Wrench
 Measuring Tape

1/2" Drive Impact Gun or 1/2"
 Drive Ratchet Wrench 3/4"
 Combination Wrench
 Felt Tipped Marker
 Hammer

VEHICLE PREPARATION

After blocking the front wheels, place jack stands under the frame so that the rear of the truck is high enough to allow the rear wheels to drop. This will give easy access to the frame area in the rear wheel well. Remove the **emergency brake cable bracket** located in the driver side wheel well, refer to figure 10 on page 7. Replace this bracket after installing the hitch mounting brackets. Find the electrical harness located on the inside of the driver side frame rail. Pull the plastic xmas tree fasteners loose from the frame in the area where the hitch mounting bracket will be located. Replace these fasteners after the hitch is installed. If the truck is a **two wheel drive**, remove the axle jounce bumper located just above the axle on the bottom of the frame, replace after the hitch is installed.

Laying Out and Marking the Bed

Template method to mark bed:

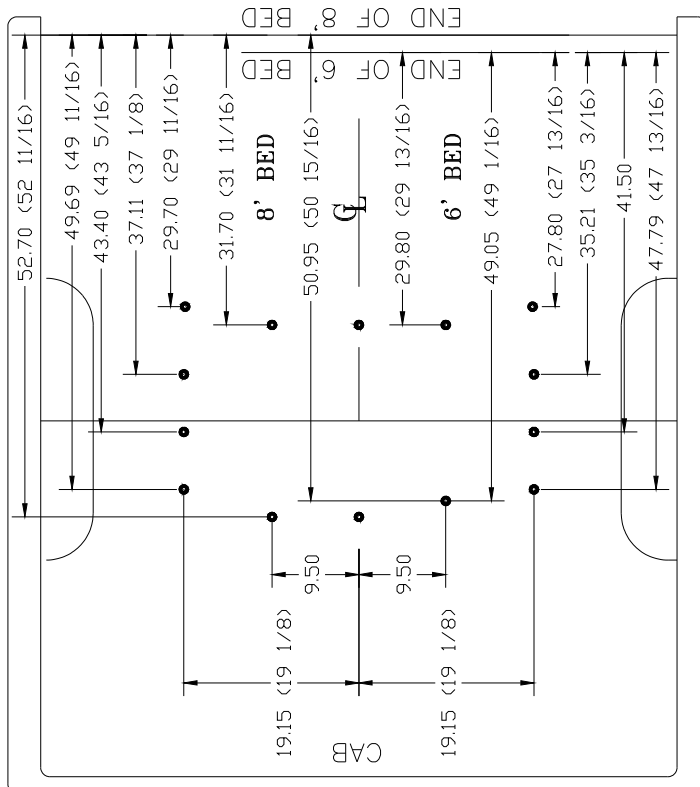
1. Place the rear edge of the template 28-11/16" (8' bed), 26-13/16" (6' bed) forward of the rear edge of the truck bed.
2. Center template in bed from left and right. Lineup the etched centerline with the centerline of the truck bed.
3. While standing on the template, use an 1/16" drill bit to mark the bed at each hole location (See figure 5 below).

Ask your distributor sales representative about hole pattern templates (P/N: 0589). This template is not included in the mounting bracket kit.

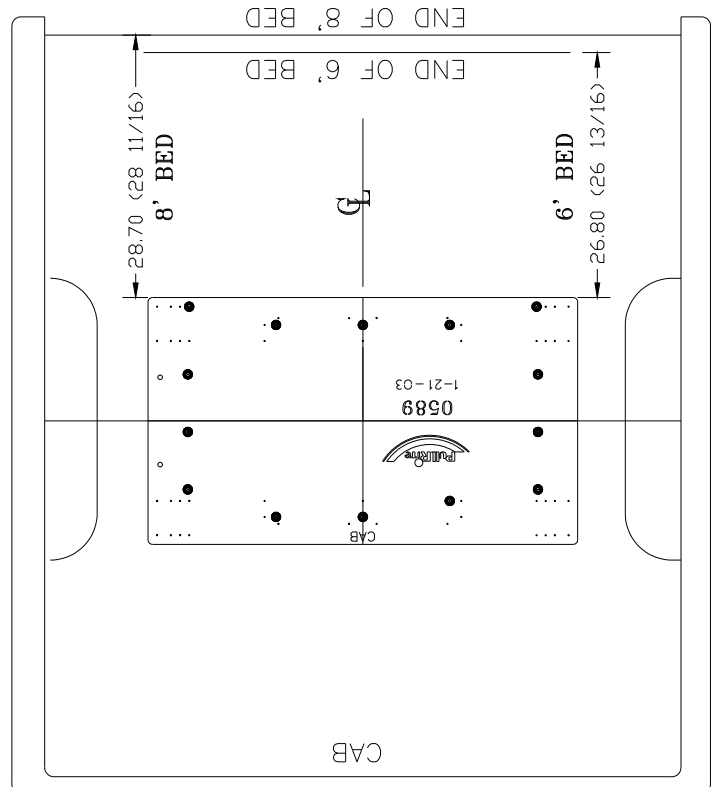
Layout method to mark bed:

Using the dimensions shown in figure 4 below, draw layout lines in the bed using a straight edge and marker or chalk line. At intersections of marked lines, use a center punch to mark the bed.

Layout Method Fig. 4.



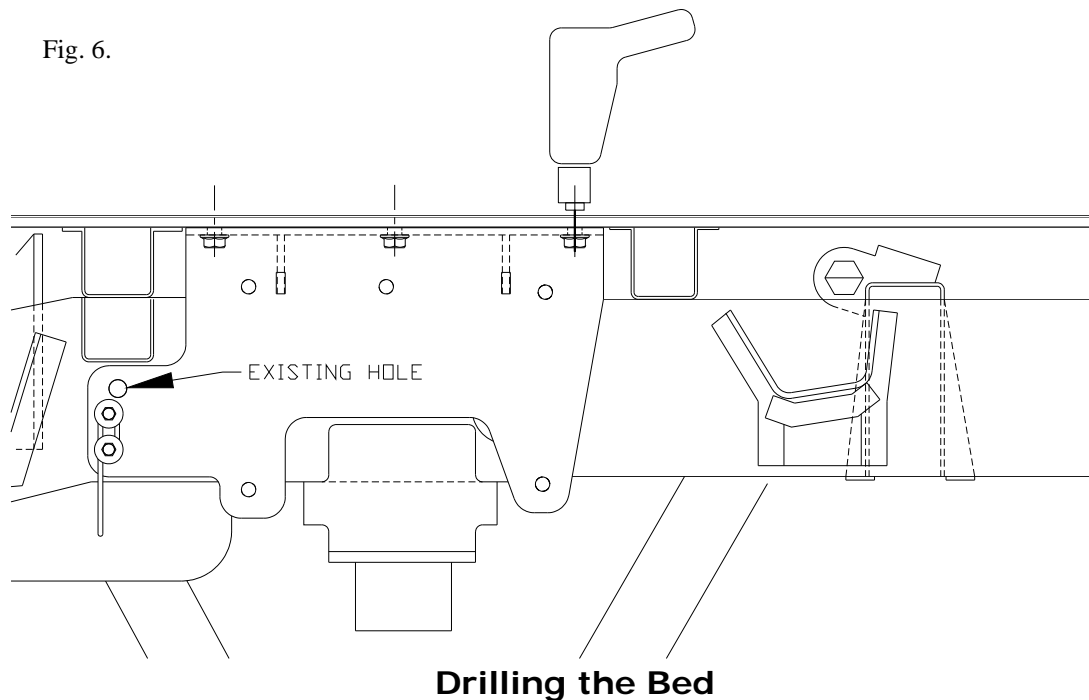
Template Method Fig. 5.



Installation Tips

To avoid drilling holes in error from out of tolerance bed to frame dimensions, mark the hole locations as lightly as possible if a center or transfer punched is used. Then use a very small diameter drill bit to drill one location on either side of bed. Place the Mounting Brackets in position on the frame so that the existing hole in the frame lines up with the pre-punched hole in the Mounting Bracket. (See figure below). The drill bit should extend through the **center** of the hole in the mounting bracket. Adjust the lay out or template pattern relative to the end of the bed, as necessary, to move the bed holes nearer the center of the mounting bracket holes.

Installers can keep a record of the adjustments that are found necessary to properly locate the bed holes. PullRite has performed numerous installations to develop these lay out dimensions, but encourages installers to satisfy themselves as to their accuracy. PullRite recommends using 3/4" holes through the bed to help accommodate tolerance variances that occur in the vehicle assembly. Experienced installers using PullRite custom brackets have been able to skip this step after several installations of a given model of truck.



1. Check all hole locations for any fuel lines or tanks and wiring that could become damaged in the drilling process.
2. Once the bed hole pattern location is satisfactory, center punch all hole locations. If the template method is used, drill all eight indicated hole locations with an 1/16" drill bit using the template as a drill guide.
3. Drill all hole locations using a 3/4" drill bit. A step drill works best for drilling sheet metal.
4. Remove drill shavings from the bed and treat the raw edges of drill holes with a rust inhibitor.

Mounting Kit Installation

(Read instructions once completely before beginning actual installation)

1. Set the Base Rail Assembly in the bed so that the obround holes in the Base Rail Assembly line up with the holes the bed. See figure 8 below.
2. Find the Bolt Plate with welded 5/8" bolt P/N: 081703 in the hardware kit. Make sure that the 5/8" Hex Nut will thread on to the bolt and that the bolt will fit into the existing frame hole, see figure 6 page 6 and figure 9 this page.
3. Find the existing 5/8" frame hole as shown in figure 6 on page 6 and the large round hole located on the bottom of the frame towards the rear of the truck, see figure 10 this page.
4. Insert a "fish" wire into the front 5/8" existing frame hole and thread it towards the large hole located on the bottom of the frame at the rear, see figure 10 below. Use a short piece of wire, fashioned like a fish hook, to snare the "fish" wire down through the large rear hole.
5. Attach the "fish" wire to the eyelet welded to the bolt portion of the Bolt Plate P/N: 081703, also attach another wire to be used as a retrieval wire if the "fish" wire should break.

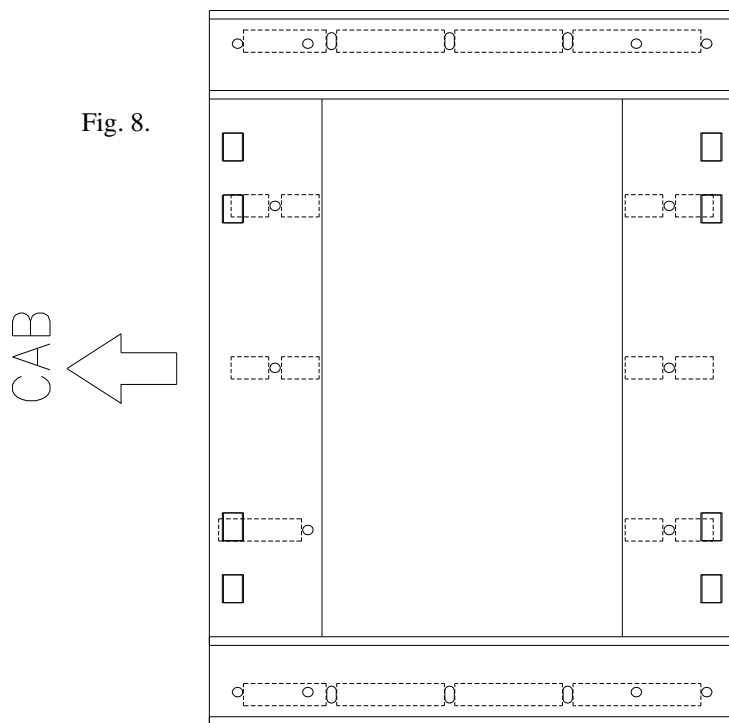


Fig. 8.

CAB
←

081703, BOLT
PLATE ASSEMBLY

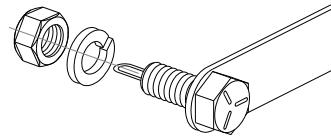


Fig. 9.

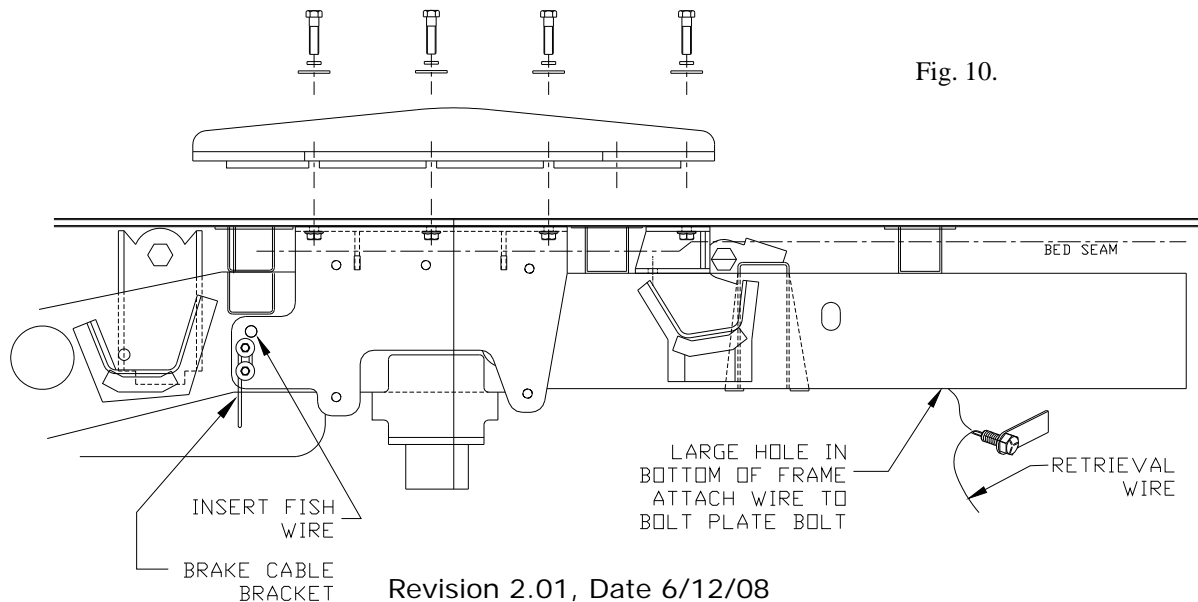


Fig. 10.

INSERT FISH
WIRE
BRAKE CABLE
BRACKET

LARGE HOLE IN
BOTTOM OF FRAME
ATTACH WIRE TO
BOLT PLATE BOLT

RETRIEVAL
WIRE

Mounting Kit Installation continued

6. When running the "fish" wire through the passenger side frame be careful to avoid running the wire over the top of the muffler brackets. The muffler brackets are rods that run cross wise through the frame rail and welded in place. If the "fish" wire is run over the top of these rods the Bolt Plate will not pass over them.
7. Gently pull the Bolt Plate through the large rear hole and out through the front existing frame hole.
8. Position the Mounting Bracket on the frame so that the 5/8" bolt of the Bolt Plate, installed in the previous step, passes through the pre drilled hole in the Mounting Bracket. Secure the Mounting Bracket in place by threading the 5/8"-11 Hex Nut and 5/8" Lock Washer on to the 5/8" bolt of the Bolt Plate. Finger tighten only.
9. Referring to the figures on this page and the exploded view on page 4, insert the eight 1/2" - 13 x 2" Bolts, with 1/2" Lock Washer and Flat Washer, through the Base Rail and tread them into the weld nuts of the Mounting Brackets. Leave these bolts loose.
10. Referring to figures 11 through 13, attach the Frame Shims and Back Up Plates to the Mounting Brackets using five of each of the 1/2"-13 x 4 1/2" bolts, 1/2" Lock Washers, 1/2"-13 Hex Nuts, for each side of the frame. Finger tighten only.
11. Referring to figures 12 through 14, attach the Rear Mounting Bracket Driver Side P/N: 050901, Passenger Side P/N: 050902 using a 1/2"-13 x 7 1/2" bolt, Center Hole Back Up Plate P/N: 05070302 and 1/2"-13 flange nut. This bolt will pass vertically through the frame via an existing hole, finger tighten only.
12. Referring to figures 15 and 16, fasten the Base Rail Assembly to the bed using five 1/2"-13 x 4 1/2" bolts, one 1/2"-13 x 2" bolt, six 1/2" flat washers, five Center Hole Back Up Plates P/N: 05070302, one Offset Hole Back Up Plate P/N: 050700303 and six 1/2"-13 flange nuts. Note that two of the forward fastening points use 4 1/2" bolts and that the other is a 2" bolt. The 4 1/2" bolts extend through the forward bed cross sill and will need to be drilled using a 1/2" bit. These two 4 1/2" bolts should not be tightened to normal specifications, tighten these bolts until the cross sill just begins to compress.
13. Tighten all other 1/2" fasteners to 75 foot pounds and all 5/8" fasteners to 150 foot pounds.
14. Install the hitch on the Base Rails, see the exploded view drawings on pages 2 and 3.

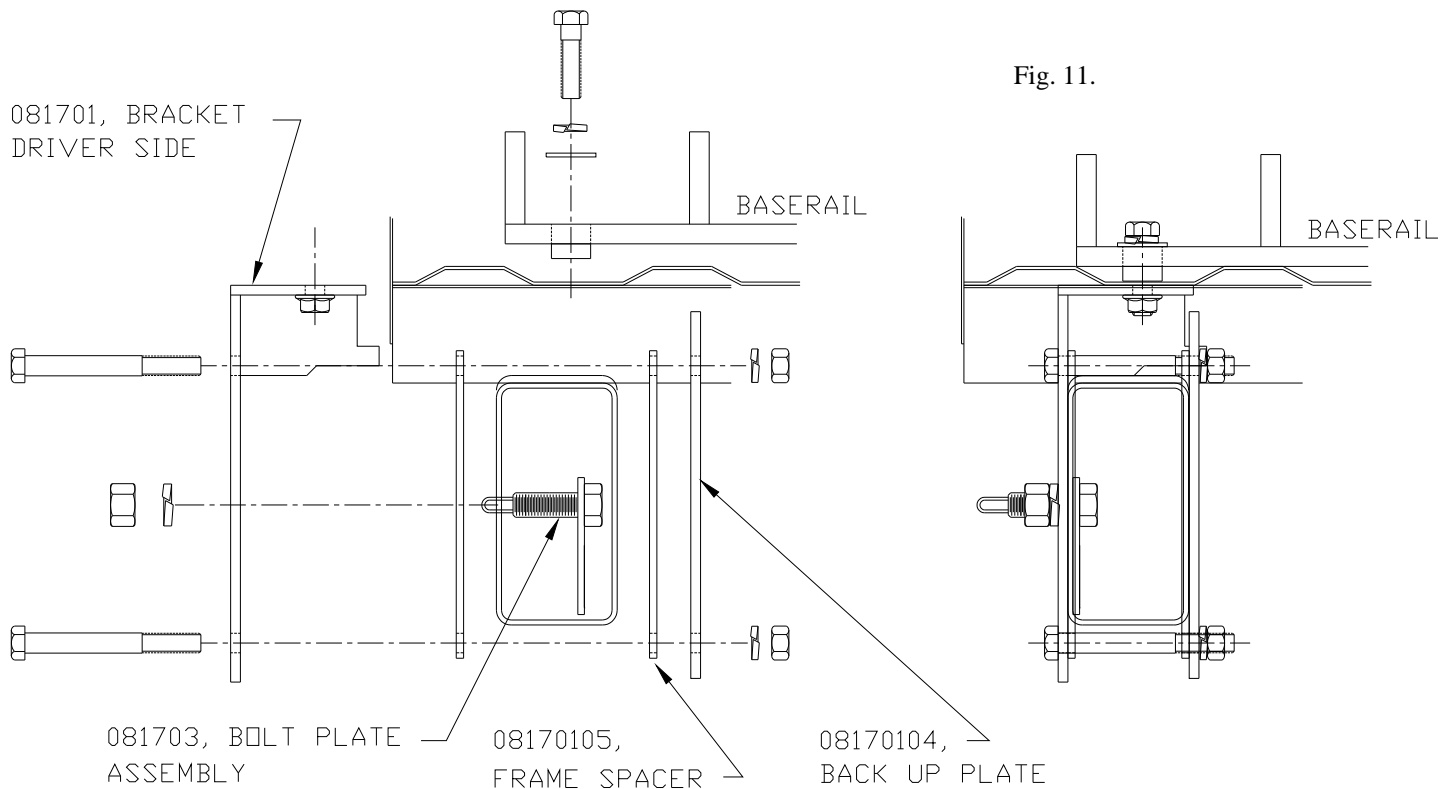


Fig. 12.

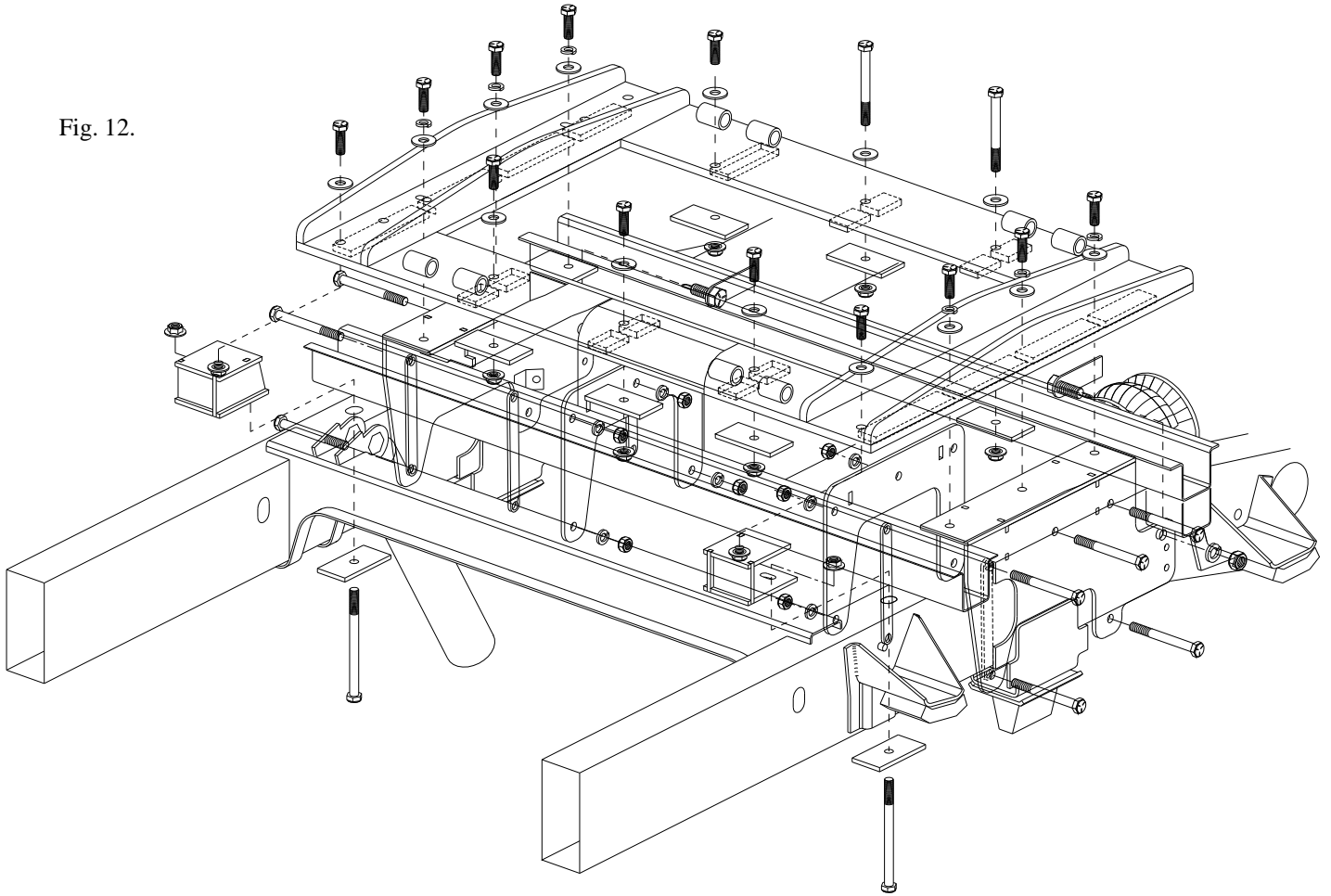
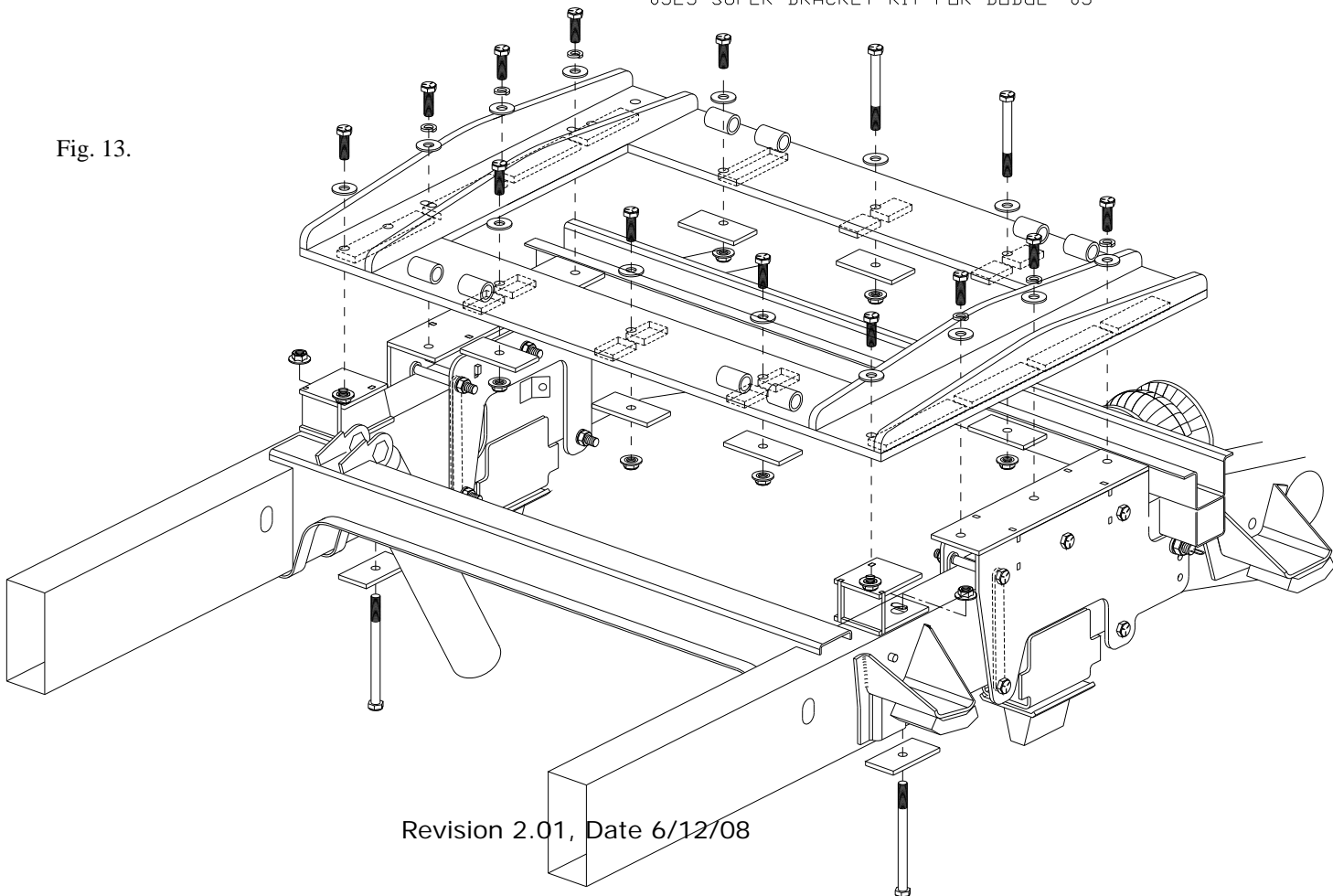


Fig. 13.



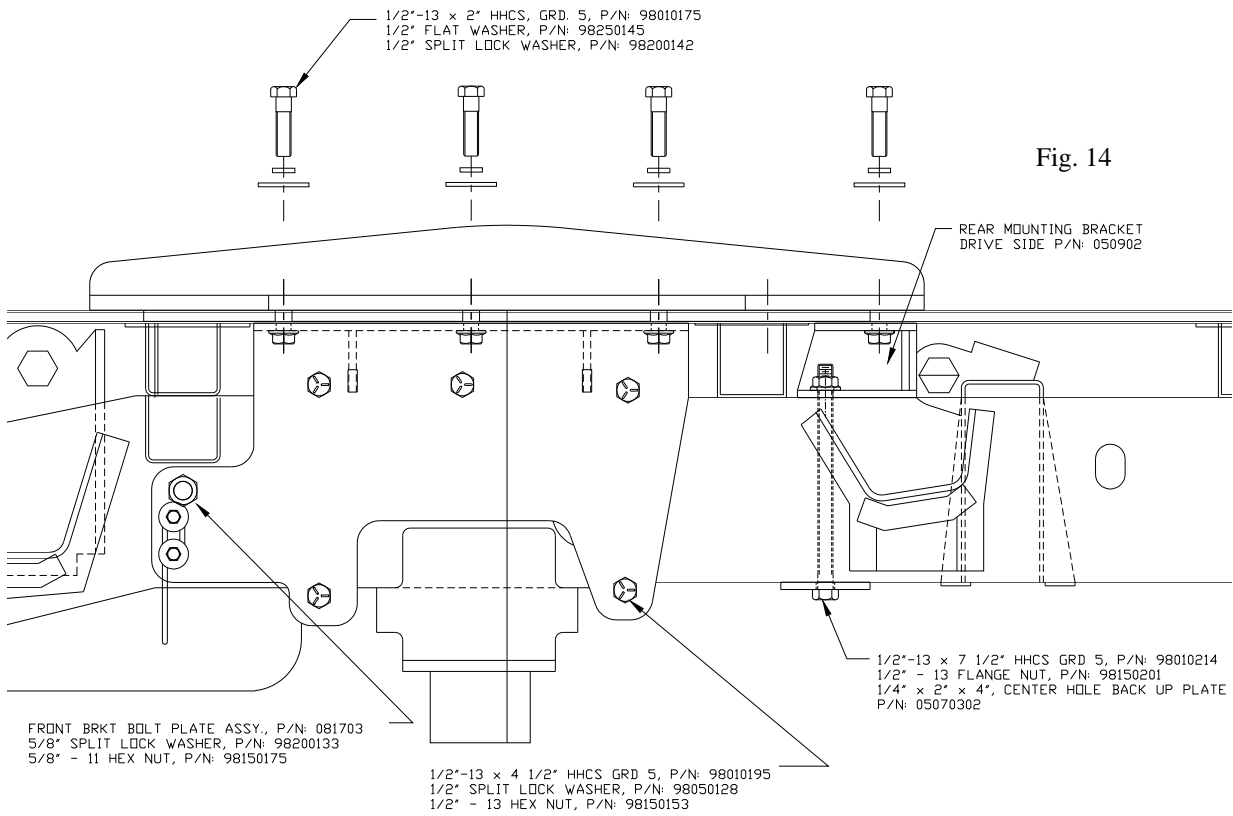


Fig. 14

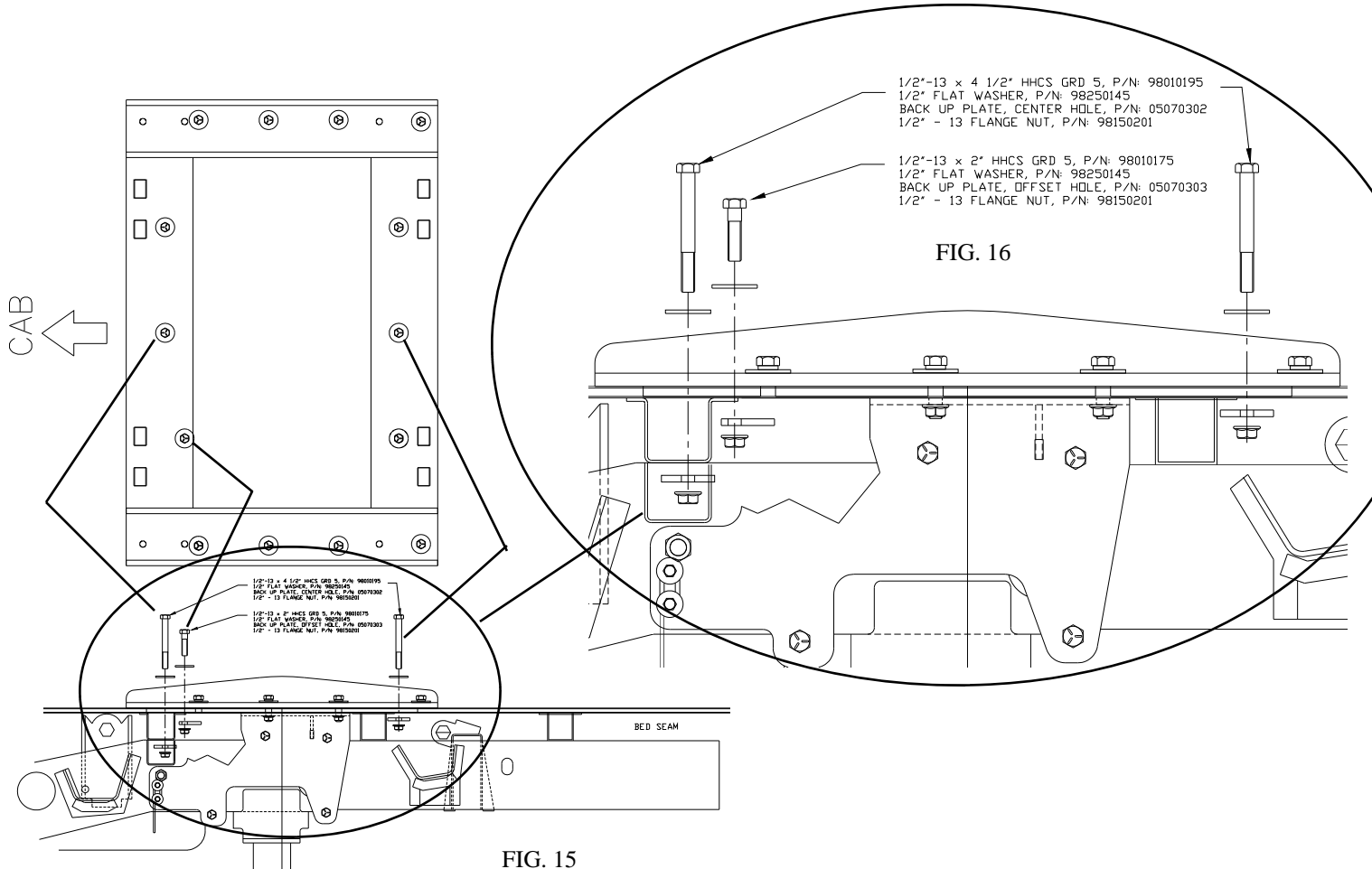


FIG. 16

FIG. 15